

EK teknik hidrolik®
EKTEKNİK HİDROLİK SANAYİ VE TİCARET LİMİTED ŞİRKETİ



duoPower



HİDROLİK ÜNİTELER

HYDRAULIC UNITS

HAVALI ve SULU SOĞUTUCULAR

AIR and WATER COOLERS

PNÖMATİK MALZEMELER

PNEUMATIC PRODUCTS

SANAYİ KÖRÜKLERİ ve KABLO TAŞIMA KANALLARI

INDUSTRIAL BELLOWS and CABLE TRANSPORT CHANNELS

duoPower

Hidrolik Pompalar Hydraulic Pumps



Sabit Debili Pistonlu Pompalar Fixed Displacement Piston Pumps	Deplasman cc/dev	Debi lt/dk	Çalışma Basıncı		Min-Max Hız dev/dak	Regülasyon Tipi
			Sürekli	Pik		
A2F 10 R4/P1	9,4	14,10	300	350	0-4700	Sabit Debili
A2F 12 R4/P1	11,6	17,40	300	350	0-3750	Sabit Debili
A2F 23 R3P4	22,7	34,05	300	350	0-3750	Sabit Debili
A2F 28 R3P4	28,1	42,15	300	350	0-2800	Sabit Debili
A2F 45 R1P3	44,3	66,45	300	350	0-2360	Sabit Debili
A2F 55 R1P3	54,8	82,20	300	350	0-2360	Sabit Debili
A2F 63 R2P3	63	94,50	300	350	0-2550	Sabit Debili
A2F 80 R2P3	80	120,00	300	350	0-2120	Sabit Debili
A2F 107 R1P3	107	160,50	300	350	0-1900	Sabit Debili
A2F 125 R2P3	125	187,50	300	350	0-2120	Sabit Debili
A2F 160 R2P3	160	240,00	300	350	0-1650	Sabit Debili
A2F 250 R5P2	250	375,00	300	350	0-1450	Sabit Debili
A2F 500	500	750,00	300	350	0-1200	Sabit Debili
Değişken Debili Pistonlu Pompalar Variable Piston Pumps	Deplasman cc/dev	Debi lt/dak	Çalışma Basıncı		Min-Max Hız dev/dak	Regülasyon Tipi
			Sürekli	Pik		
A7V58 LV 1RPFMO / 7,5 KW 1.450 RPM/MIN	58	84,10	300	350	2850	LV+MA
A7V78 LV 1RPFMO / 11 KW 1.450 RPM/MIN	78	113,10	300	350	2540	LV+MA
A7V107 LV 1RPFMO - 37 KW / 1450 RPM	107	155,15	300	350	1900	LV+MA
A7V117 LV 1RPFMO /22 KW 1.450 RPM/MIN	117	169,65	300	350	2240	LV+MA
A7V117 HD 1RPFMO	117	169,65	300	350	2240	HD+MA
A7V117 DR 1RPFMO	117	169,65	300	350	2240	DR+MA
A7V117EP 1RPFMO ELECTRONIC CARD NOT INCL.	117	169,65	300	350	2240	EP+MA
A7V160 LV 1RPFMO-37KW	160	232,00	300	350	1650	LV+MA
A7V160 HD 1RPFMO	160	232,00	300	350	1650	HD+MA
A7V160 DR 1RPFMO	160	232,00	300	350	1650	DR+MA
A7V160EP 1RPFMO ELECTRONIC CARD NOT INCL.	160	232,00	300	350	1650	EP+MA
A7V 250 HD / LV / DR / MA	250	362,50	300	350	1400	
A7V 500 HD / LV / DR / MA	500	725,00	300	350	1120	
Değişken Debili Pistonlu Pompalar Swash Plate Design Variable Piston Pumps	Deplasman cc/dev	Debi lt/dak	Çalışma Basıncı		Min-Max Hız dev/dak	Regülasyon Tipi
			Sürekli	Pik		
A10VO 28 DFR/31R PSC62N00	28	40,60	280	350	3000	DFR
A10VO 45 DFR/31R PSC62N00	45	65,25	280	350	2600	DFR
A10VO 71 DFR/31R PSC62N00	71	102,95	280	350	2200	DFR
A10VO 100 DFR/31R PSC62N00	100	145,00	280	350	2000	DFR
A10VO 28 DFLR/31R PSC62N00/5,5KW	28	40,60	280	350	3000	DFLR
A10VO 45 DFLR/31R PSC62N00/11KW	45	65,25	280	350	2600	DFLR
A10VO 71 DFLR/31R PSC62N00/22KW	71	102,95	280	350	2200	DFLR
A10VO 100 DFLR/31R PSC62N00/15KW	100	145,00	280	350	2000	DFLR
A10VO 28 DFR/31L PSC62N00	28	40,60	280	350	3000	DFR
A10VO 45 DFR/31L PSC62N00	45	65,25	280	350	2600	DFR
A10VO 71 DFR/31L PSC62N00	71	102,95	280	350	2200	DFR
A10VSO 18 DFR/31R PPA12N00	18	26,10	280	350	3300	DFR
A10VSO 28 DFR/31R PPA12N00	28	40,60	280	350	3000	DFR
A10VSO 45 DFR/31R PPA12N00	45	65,25	280	350	2600	DFR
A10VSO 71 DFR/31R PPA12N00	71	102,95	280	350	2200	DFR
A10VSO 100 DFR/31R PPA12N00	100	145,00	280	350	2000	DFR
A10VSO 140 DFR/31R PPB12N00	140	203,00	280	350	1800	DFR
A10VSO 28 DFLR/31R PPA12N00/5,5KW	28	40,60	280	350	3000	DFLR
A10VSO 45 DFLR/31R PPA12N00/11KW	45	65,25	280	350	2600	DFLR
A10VSO 71 DFLR/31R PPA12N00/22KW	71	102,95	280	350	2200	DFLR
A10VSO 140 DFLR/31R PPA12N00/30KW	140	203,00	350	350	1800	DFLR



Paletli Pompalar (Sabit Debli) Vane Pumps (fixed displacement)	Deplasman cc/dev	Debi lt/dk	Azami Basınc Bar	Min-Max Hız dev/dak	Regülasyon Tipi
V10-1B-1B-001C-20	3	4,35	172	1000 - 4800	Sabit Debili
V10-1B-2B-001C-20	6	8,70	172	1000 - 4500	Sabit Debili
V10-1B-3B-001C-20	9	13,05	172	1000 - 4000	Sabit Debili
V10-1B-4B-001C-20	13	18,85	172	1000 - 3400	Sabit Debili
V10-1B-5B-001C-20	16	23,20	172	1000 - 3200	Sabit Debili
V10-1B-6B-001C-20	19	27,55	172	1000 - 3000	Sabit Debili
V10-1B-7B-001C-20	22	31,90	172	1000 - 2800	Sabit Debili
V20-1B-8B-001C-11 EN 1000	25	36,25	172	1000 - 2800	Sabit Debili
V20-1B-9B-001C-11 EN 1000	28	40,60	172	1000 - 2800	Sabit Debili
V20-1B-10B-001C-11 EN 1000	32	46,40	172	1000 - 2500	Sabit Debili
V20-1B-11B-001C-11 EN 1000	35	50,75	172	1000 - 2500	Sabit Debili
V20-1B-12B-001C-11 EN 1000	38	55,10	172	1000 - 2400	Sabit Debili
V20-1B-13B-001C-11 EN 1000	41	59,45	172	1000 - 2400	Sabit Debili
20V 05A-001C-22R	16	23,20	206	1000 - 1800	Sabit Debili
20V 08A-001C-22R	25	36,25	206	1000 - 1800	Sabit Debili
20V 12A-001C-22R	38	55,10	172	1000 - 1800	Sabit Debili
20V 14A-001C-22R	44	63,80	138	1000 - 1800	Sabit Debili
25V-12A-001C-22R	38	55,10	206	1000 - 1800	Sabit Debili
25V-14A-001C-22R	44	63,80	206	1000 - 1800	Sabit Debili
25V-17A-001C-22R	54	78,30	206	1000 - 1800	Sabit Debili
25V-19A-001C-22R	60	87,00	172	1000 - 1800	Sabit Debili
25V-21A-001C-22R	66	95,70	159	1000 - 1800	Sabit Debili
35V 25A-001A-22R	79	114,55	172	1000 - 1800	Sabit Debili
35V 30A-001A-22R	95	137,75	172	1000 - 1800	Sabit Debili
35V 35A-001A-22R	110	159,50	172	1000 - 1800	Sabit Debili
35V 38A-001A-22R	120	174,00	172	1000 - 1800	Sabit Debili
45V 42A-086A-22R	132	191,40	172	1000 - 1800	Sabit Debili
45V 47A-086A-22R	150	217,50	172	1000 - 1800	Sabit Debili
45V 50A-086A-22R	158	229,10	172	1000 - 1800	Sabit Debili
45V 57A-086A-22R	180	261,00	172	1000 - 1800	Sabit Debili
45V 60A-086A-22R	189	274,05	172	1000 - 1800	Sabit Debili
Paletli Pompalar (Sabit Debli) Vane Pumps (fixed displacement)	Deplasman cc/dev	Debi lt/dak	Azami Basınc Bar	Min-Max Hız dev/dak	Regülasyon Tipi
PV2R1-6-F-1-R-D Shaft Size: Ø 19.05	5,8	8,41	210	750 - 1800	Sabit Debili
PV2R1-8-F-1-R-D Shaft Size: Ø 19.05	8	11,60	210	750 - 1800	Sabit Debili
PV2R1-10-F-1-R-D Shaft Size: Ø 19.05	9,4	13,63	210	750 - 1800	Sabit Debili
PV2R1-12-F-1-R-D Shaft Size: Ø 19.05	12,2	17,59	210	750 - 1800	Sabit Debili
PV2R1-14-F-1-R-D Shaft Size: Ø 19.05	13,7	19,86	210	750 - 1800	Sabit Debili
PV2R1-17-F-1-R-D Shaft Size: Ø 19.05	16,6	24,07	210	750 - 1800	Sabit Debili
PV2R1-19-F-1-R-D Shaft Size: Ø 19.05	18,6	26,97	210	750 - 1800	Sabit Debili
PV2R1-23-F-1-R-D Shaft Size: Ø 19.05	22,7	32,91	210	750 - 1800	Sabit Debili
PV2R1-25-F-1-R-D Shaft Size: Ø 19.05	25,3	36,68	210	750 - 1800	Sabit Debili
PV2R2-33-F-1-R-D Shaft Size: Ø 25.4	33,3	48,28	210	600 - 1800	Sabit Debili
PV2R2-41-F-1-R-D Shaft Size: Ø 25.4	41,3	59,88	210	600 - 1800	Sabit Debili
PV2R2-47-F-1-R-D Shaft Size: Ø 25.4	47,2	68,44	210	600 - 1800	Sabit Debili
PV2R2-53-F-1-R-D Shaft Size: Ø 25.4	52,5	76,12	210	600 - 1800	Sabit Debili
PV2R2-59-F-1-R-D Shaft Size: Ø 25.4	58,2	84,39	210	600 - 1800	Sabit Debili
PV2R2-65-F-1-R-D Shaft Size: Ø 25.4	64,7	93,81	210	600 - 1800	Sabit Debili
PV2R3-76-F-1-R-D Shaft Size: Ø 31.75	76	110,20	210	600 - 1800	Sabit Debili
PV2R3-94-F-1-R-D Shaft Size: Ø 31.75	93,6	135,72	210	600 - 1800	Sabit Debili
PV2R3-116-F-1-R-D Shaft Size: Ø 31.75	115,6	167,62	210	600 - 1800	Sabit Debili

duoPower

Hidrolik Pompalar Hydraulic Pumps



Değişken Debili Paletli Pompalar Variable Displacement Vane Pumps	Deplasman cc/dev	Debi lt/dk	Çalışma Basıncı		Min-Max Hız dev/dak	Regülasyon Tipi
			Sürekli	Pik		
PV 70-G-6,6 / 9,6	6,6	9,57	60	70	800 - 1800	DR
PV 70-G-8,3 / 12	8,3	12,03	60	70	800 - 1800	DR
PV 70-G-8,3 / 12	11,1	16,10	60	70	800 - 1800	DR
PV 70-G-16,6 / 24,1	16,6	24,07	60	70	800 - 1800	DR
PV 70-G-22,2 / 32,2	22,2	32,20	60	70	800 - 1800	DR
Dışlı Pompalar (OP1 Serisi) (Sabit Debli) Gear Pumps (OP1 Series)	Deplasman cc/dev	Debi lt/dk	Basınç / Bar		Min-Max Hız dev/dak	Regülasyon Tipi
OP1-103 ABP	1.2	1.5	280		800 - 1800	Sabit Debili
OP1-103 CBP	1.2	1.5	280		800 - 1800	Sabit Debili
OP1-106 ABP	2.2	2.9	280		800 - 1800	Sabit Debili
OP1-106 CBP	2.2	2.9	280		800 - 1800	Sabit Debili
OP1-108 ABP	2.9	3.9	280		800 - 1800	Sabit Debili
OP1-108 CBP	2.9	3.9	280		800 - 1800	Sabit Debili
Dışlı Pompalar (1P1 Serisi) (Sabit Debli) Gear Pumps (OP1 Series)	Deplasman cc/dev	Debi lt/dk	Basınç / Bar		Min-Max Hız dev/dak	Regülasyon Tipi
1PN-039 AB 15	4.0	5.7	250		800 - 1800	Sabit Debili
1PN-039 CB 15	4.0	5.7	250		800 - 1800	Sabit Debili
1PN-040 ABT 1	4.0	5.7	250		800 - 1800	Sabit Debili
1PN-040 CBT 1	4.0	5.7	250		800 - 1800	Sabit Debili
1PN-060 AB 2	6.1	8.7	250		800 - 1800	Sabit Debili
1PN-060 CB 2	6.1	8.7	250		800 - 1800	Sabit Debili
1PN-061 AB 2	6.1	8.7	250		800 - 1800	Sabit Debili
1PN-061 CB 12	8.2	8.7	250		800 - 1800	Sabit Debili
1PN-082 CB 12	8.2	11.8	250		800 - 1800	Sabit Debili
1PN-082 AB 3	8.2	11.8	250		800 - 1800	Sabit Debili
1PN-095 AB 6	9.5	13.1	250		800 - 1800	Sabit Debili
1PN-095 CB 6	9.5	13.1	250		800 - 1800	Sabit Debili
1PN-119 AB 11	11.9	17.1	250		800 - 1800	Sabit Debili
1PN-119 CB 11	11.9	17.1	250		800 - 1800	Sabit Debili
1PN-140 AB 11	14.0	20.1	250		800 - 1800	Sabit Debili
1PN-140 CB 11	14.0	20.1	250		800 - 1800	Sabit Debili
1PN-146 AB 11	14.6	21.0	250		800 - 1800	Sabit Debili
1PN-146 CB 11	14.6	21.0	250		800 - 1800	Sabit Debili
1PN-168 AB 11	16.8	24.1	250		800 - 1800	Sabit Debili
1PN-168 CB 11	16.8	24.1	250		800 - 1800	Sabit Debili
1PN-192 AB 11	19.2	27.2	250		800 - 1800	Sabit Debili
1PN-192 CB 11	19.2	27.2	250		800 - 1800	Sabit Debili
1PN-229 AB 11	19.2	32.9	210		800 - 1800	Sabit Debili
1PN-229 CB 11	19.2	32.9	210		800 - 1800	Sabit Debili
1PN-281 AB 11	28.1	40.4	175		800 - 1800	Sabit Debili
1PN-281 CB 11	28.1	40.4	175		800 - 1800	Sabit Debili

duoPower

Hidrolik Pompalar Hydraulic Pumps



Dışli Pompalar (2P1 Serisi) (Sabit Debli) Gear Pumps (OP1 Series)	Deplasman cc/dev	Debi lt/dk	Basınç / Bar	Min-Max Hız dev/dak	Regülasyon Tipi
2P1-3105 SABP	33.3	47.7	250	800 - 1800	Sabit Debili
2P1-3105 SCBP	33.3	47.7	250	800 - 1800	Sabit Debili
2P1-3105 SAB7	33.3	47.7	250	800 - 1800	Sabit Debili
2P1-3105 SCB7	33.3	47.7	250	800 - 1800	Sabit Debili
2P1-3120 SABP	37.8	54.5	210	800 - 1800	Sabit Debili
2P1-3120 SCBP	37.8	54.5	210	800 - 1800	Sabit Debili
2P1-3120 SAB7	37.8	54.5	210	800 - 1800	Sabit Debili
2P1-3120 SCB7	37.8	54.5	210	800 - 1800	Sabit Debili
2P1-3135 SABP	42.6	64.0	210	800 - 1800	Sabit Debili
2P1-3135 SCBP	42.6	64.0	210	800 - 1800	Sabit Debili
2P1-3135 SAB7	42.6	64.0	210	800 - 1800	Sabit Debili
2P1-3135 SCB7	42.6	64.0	210	800 - 1800	Sabit Debili
2P1-3146 SABP	45.4	66.5	210	800 - 1800	Sabit Debili
2P1-3146 SCBP	45.4	66.5	210	800 - 1800	Sabit Debili
2P1-3158 SABP	49.4	71.8	210	800 - 1800	Sabit Debili
2P1-3158 SCBP	49.4	71.8	210	800 - 1800	Sabit Debili
2P1-3158 SAB7	49.4	71.8	210	800 - 1800	Sabit Debili
2P1-3158 SCB7	49.4	71.8	210	800 - 1800	Sabit Debili
2P1-3180 SABP	56.1	81.5	175	800 - 1800	Sabit Debili
2P1-3180 SCBP	56.1	81.5	175	800 - 1800	Sabit Debili
2P1-3180 SAB7	56.1	81.5	175	800 - 1800	Sabit Debili
2P1-3180 SCB7	56.1	81.5	175	800 - 1800	Sabit Debili
Dışli Pompalar (3P1 Serisi) (Sabit Debli) Gear Pumps (OP1 Series)	Deplasman cc/dev	Debi lt/dk	Basınç / Bar	Min-Max Hız dev/dak	Regülasyon Tipi
3P1-4150 SABP	47.0	68.2	248	800 - 1800	Sabit Debili
3P1-4150 SCBP	47.0	68.2	248	800 - 1800	Sabit Debili
3P1-4180 SABP	56.1	81.8	248	800 - 1800	Sabit Debili
3P1-4180 SCBP	56.1	81.8	248	800 - 1800	Sabit Debili
3P1-4210 SABP	65.1	95.5	248	800 - 1800	Sabit Debili
3P1-4210 SCBP	65.1	95.5	248	800 - 1800	Sabit Debili
3P1-4250 SABP	77.0	113.7	248	800 - 1800	Sabit Debili
3P1-4250 SCBP	77.0	113.7	248	800 - 1800	Sabit Debili
3P1-4300 SABP	91.9	136.4	207	800 - 1800	Sabit Debili
3P1-4300 SCBP	91.9	136.4	207	800 - 1800	Sabit Debili
3P1-4330 SABP	101.05	150.0	193	800 - 1800	Sabit Debili
3P1-4330 SCBP	101.05	150.0	193	800 - 1800	Sabit Debili
3P1-4380 SABP	116.7	173.0	172	800 - 1800	Sabit Debili
3P1-4380 SCBP	116.7	173.0	172	800 - 1800	Sabit Debili



duoPower

Hidrolik Motorlar Hydraulic Motors



Orbit Hidromotorlar (BMP Serisi) Orbital Hydromotors (BMP Series)	Mil çapı (mm)	Deplasman (cc/dev.)	Hız (dev/dk.)	Basınç (bar)	Maks.Tork (daNm)	Maks.Debi (lt/dk.)
BMP 36	25	36.0	1050	125	5.5	40
BMP 50	25	51.7	850	125	8.1	45
BMP 80	25	77.7	650	125	12.9	55
BMP 100	25	96.2	520	125	16.1	55
BMP 125	25	117.9	390	125	20.2	55
BMP 160	25	155.5	310	100	20.4	55
BMP 200	25	189.9	260	100	25.9	55
BMP 250	25	231.0	200	100	32.5	55
BMP 315	25	311.7	156	85	34.5	55
BMP 400	25	386.2	150	85	43.5	55
Orbit Hidromotorlar (BMR Serisi) Orbital Hydromotors (BMR Series)	Mil çapı (mm)	Deplasman (cc/dev.)	Hız (dev/dk.)	Basınç (bar)	Maks.Tork (daNm)	Maks.Debi (lt/dk.)
BMR 36	25	36.0	1055	140	6.9	40
BMR 50	25	51.3	755	140	10.0	40
BMR 80	25	80.6	750	140	16.0	60
BMR 100	25	100.8	600	140	20.0	60
BMR 125	25	124.9	475	140	25.0	60
BMR 160	25	157.2	375	140	32.0	60
BMR 200	25	199.2	300	120	33.0	60
BMR 250	25	252.0	240	110	35.2	60
BMR 315	25	314.5	190	85	36.0	60
BMR 400	25	395.0	180	70	40.0	60
Orbit Hidromotorlar (BMH Serisi) Orbital Hydromotors (BMH Series)	Mil çapı (mm)	Deplasman (cc/dev.)	Hız (dev/dk.)	Basınç (bar)	Maks.Tork (daNm)	Maks.Debi (lt/dk.)
BMH 200	32	203.2	263	125	29.8	60
BMH 250	32	255.9	209	125	37.5	60
BMH 315	32	316.1	169	125	45.4	60
BMH 400	32	406.4	131	125	47.7	60
BMH 500	32	489.2	109	125	45.9	60
BMH 200	35	203.2	263	125	29.8	60
BMH 250	35	255.9	209	125	37.5	60
BMH 315	35	316.1	169	125	45.4	60
BMH 400	35	406.4	131	125	47.7	60
BMH 500	35	489.2	109	125	45.9	60





ÜRÜN KODU PRODUCT CODE	ANMA ÖLÇÜSÜ /SIZE	TEKNİK ÖZELLİK TECHNICAL INF.	MAX BASINÇ (P,A,B) bar MAX PRESSURE (bar)	MAX DEBİ (LT/D) MAX FLOW (Lt/min)	TEKNİK RESMİ
BOBINLİ YÖN KONTROL VALFLERİ / SELENOID DIRECTIONAL CONTROL VALVES					
4WE6HA60/DC12NZ5L	NG 6	4/2 "HA" Tek Bobin	315	80	
4WE6HA60/DC24NZ5L	NG 6	4/2 "HA" Tek Bobin	315	80	
4WE6HA60/AC110NZ5L	NG 6	4/2 "HA" Tek Bobin	315	80	
4WE6HA60/AC220NZ5L	NG 6	4/2 "HA" Tek Bobin	315	80	



ÜRÜN KODU PRODUCT CODE	ANMA ÖLÇÜSÜ /SIZE	TEKNİK ÖZELLİK TECHNICAL INF.	MAX BASINÇ (P,A,B) bar MAX PRESSURE (bar)	MAX DEBİ (LT/D) MAX FLOW (Lt/min)	TEKNİK RESMİ
BOBINLİ YÖN KONTROL VALFLERİ / SELENOID DIRECTIONAL CONTROL VALVES					
4WE6D60/DC12NZ5L	NG 6	4/2 "D" Tek Bobin	315	80	
4WE6D60/DC24NZ5L	NG 6	4/2 "D" Tek Bobin	315	80	
4WE6D60/AC110NZ5L	NG 6	4/2 "D" Tek Bobin	315	80	
4WE6D60/AC220NZ5L	NG 6	4/2 "D" Tek Bobin	315	80	



ÜRÜN KODU PRODUCT CODE	ANMA ÖLÇÜSÜ /SIZE	TEKNİK ÖZELLİK TECHNICAL INF.	MAX BASINÇ (P,A,B) bar MAX PRESSURE (bar)	MAX DEBİ (LT/D) MAX FLOW (Lt/min)	TEKNİK RESMİ
BOBINLİ YÖN KONTROL VALFLERİ / SELENOID DIRECTIONAL CONTROL VALVES					
4WE6E60/DC12NZ5L	NG 6	4/3 "K.M." merkez	315	80	
4WE6E60/DC24NZ5L	NG 6	4/3 "K.M." merkez	315	80	
4WE6E60/AC110NZ5L	NG 6	4/3 "K.M." merkez	315	80	
4WE6E60/AC220NZ5L	NG 6	4/3 "K.M." merkez	315	80	



ÜRÜN KODU PRODUCT CODE	ANMA ÖLÇÜSÜ /SIZE	TEKNİK ÖZELLİK TECHNICAL INF.	MAX BASINÇ (P,A,B) bar MAX PRESSURE (bar)	MAX DEBİ (LT/D) MAX FLOW (Lt/min)	TEKNİK RESMİ
BOBINLİ YÖN KONTROL VALFLERİ / SELENOID DIRECTIONAL CONTROL VALVES					
4WE6J60/DC12NZ5L	NG 6	4/3 "A,B,T," merkez	315	80	
4WE6J60/DC24NZ5L	NG 6	4/3 "A,B,T," merkez	315	80	
4WE6J60/AC110NZ5L	NG 6	4/3 "A,B,T," merkez	315	80	
4WE6J60/AC220NZ5L	NG 6	4/3 "A,B,T," merkez	315	80	



ÜRÜN KODU PRODUCT CODE	ANMA ÖLÇÜSÜ /SIZE	TEKNİK ÖZELLİK TECHNICAL INF.	MAX BASINÇ (P,A,B) bar MAX PRESSURE (bar)	MAX DEBİ (LT/D) MAX FLOW (Lt/min)	TEKNİK RESMİ
BOBINLİ YÖN KONTROL VALFLERİ / SELENOID DIRECTIONAL CONTROL VALVES					
4WE6JA60/DC12NZ5L	NG 6	4/2 "JA" Tek Bobin merkez	315	80	
4WE6JA60/DC24NZ5L	NG 6	4/2 "JA" Tek Bobin merkez	315	80	
4WE6JA60/AC110NZ5L	NG 6	4/2 "JA" Tek Bobin merkez	315	80	
4WE6JA60/AC220NZ5L	NG 6	4/2 "JA" Tek Bobin merkez	315	80	



ÜRÜN KODU PRODUCT CODE	ANMA ÖLÇÜSÜ /SIZE	TEKNİK ÖZELLİK TECHNICAL INF.	MAX BASINÇ (P,A,B) bar MAX PRESSURE (bar)	MAX DEBİ (LT/D) MAX FLOW (Lt/min)	TEKNİK RESMİ
BOBINLİ YÖN KONTROL VALFLERİ / SELENOID DIRECTIONAL CONTROL VALVES					
4WE6G60/DC12NZ5L	NG 6	4/3 "A.M." merkez	315	80	
4WE6G60/DC24NZ5L	NG 6	4/3 "A.M." merkez	315	80	
4WE6G60/AC110NZ5L	NG 6	4/3 "A.M." merkez	315	80	
4WE6G60/AC220NZ5L	NG 6	4/3 "A.M." merkez	315	80	

duoPower

Hidrolik Valfler Hydraulic Valves



ÜRÜN KODU PRODUCT CODE	ANMA ÖLÇÜSÜ /SIZE	TEKNİK ÖZELLİK TECHNICAL INF.	MAX BASINÇ (P,A,B) bar MAX PRESSURE (bar)	MAX DEBİ (LT/D) MAX FLOW (Lt/min)	TEKNİK RESMİ
BOBINLİ YÖN KONTROL VALFLERİ / SELENOID DIRECTIONAL CONTROL VALVES					
4WE6H60/DC12NZ5L	NG 6	4/3 "H" merkez	315	80	
4WE6H60/DC24NZ5L	NG 6	4/3 "H" merkez	315	80	
4WE6H60/AC110NZ5L	NG 6	4/3 "H" merkez	315	80	
4WE6H60/AC220NZ5L	NG 6	4/3 "H" merkez	315	80	



ÜRÜN KODU PRODUCT CODE	ANMA ÖLÇÜSÜ /SIZE	TEKNİK ÖZELLİK TECHNICAL INF.	MAX BASINÇ (P,A,B) bar MAX PRESSURE (bar)	MAX DEBİ (LT/D) MAX FLOW (Lt/min)	TEKNİK RESMİ
BOBINLİ YÖN KONTROL VALFLERİ / SELENOID DIRECTIONAL CONTROL VALVES					
4WE6F60/DC12NZ5L	NG 6	4/3 "F" merkez	315	80	
4WE6F60/DC24NZ5L	NG 6	4/3 "F" merkez	315	80	
4WE6F60/AC110NZ5L	NG 6	4/3 "F" merkez	315	80	
4WE6F60/AC220NZ5L	NG 6	4/3 "F" merkez	315	80	



ÜRÜN KODU PRODUCT CODE	ANMA ÖLÇÜSÜ /SIZE	TEKNİK ÖZELLİK TECHNICAL INF.	MAX BASINÇ (P,A,B) bar MAX PRESSURE (bar)	MAX DEBİ (LT/D) MAX FLOW (Lt/min)	TEKNİK RESMİ
BOBINLİ YÖN KONTROL VALFLERİ / SELENOID DIRECTIONAL CONTROL VALVES					
4WE6L60/DC12NZ5L	NG 6	4/3 "L" merkez	315	80	
4WE6L60/DC24NZ5L	NG 6	4/3 "L" merkez	315	80	
4WE6L60/AC110NZ5L	NG 6	4/3 "L" merkez	315	80	
4WE6L60/AC220NZ5L	NG 6	4/3 "L" merkez	315	80	



ÜRÜN KODU PRODUCT CODE	ANMA ÖLÇÜSÜ /SIZE	TEKNİK ÖZELLİK TECHNICAL INF.	MAX BASINÇ (P,A,B) bar MAX PRESSURE (bar)	MAX DEBİ (LT/D) MAX FLOW (Lt/min)	TEKNİK RESMİ
BOBINLİ YÖN KONTROL VALFLERİ / SELENOID DIRECTIONAL CONTROL VALVES					
4WE6M60/DC12NZ5L	NG 6	4/3 "M" merkez	315	80	
4WE6M60/DC24NZ5L	NG 6	4/3 "M" merkez	315	80	
4WE6M60/AC110NZ5L	NG 6	4/3 "M" merkez	315	80	
4WE6M60/AC220NZ5L	NG 6	4/3 "M" merkez	315	80	



ÜRÜN KODU PRODUCT CODE	ANMA ÖLÇÜSÜ /SIZE	TEKNİK ÖZELLİK TECHNICAL INF.	MAX BASINÇ (P,A,B) bar MAX PRESSURE (bar)	MAX DEBİ (LT/D) MAX FLOW (Lt/min)	TEKNİK RESMİ
BOBINLİ YÖN KONTROL VALFLERİ / SELENOID DIRECTIONAL CONTROL VALVES					
4WE6P60/DC12NZ5L	NG 6	4/3 "P" merkez	315	80	
4WE6P60/DC24NZ5L	NG 6	4/3 "P" merkez	315	80	
4WE6P60/AC110NZ5L	NG 6	4/3 "P" merkez	315	80	
4WE6P60/AC220NZ5L	NG 6	4/3 "P" merkez	315	80	



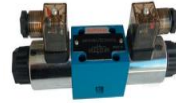
ÜRÜN KODU PRODUCT CODE	ANMA ÖLÇÜSÜ /SIZE	TEKNİK ÖZELLİK TECHNICAL INF.	MAX BASINÇ (P,A,B) bar MAX PRESSURE (bar)	MAX DEBİ (LT/D) MAX FLOW (Lt/min)	TEKNİK RESMİ
BOBINLİ YÖN KONTROL VALFLERİ / SELENOID DIRECTIONAL CONTROL VALVES					
4WE6Q60/DC12NZ5L	NG 6	4/3 "Q" merkez	315	80	
4WE6Q60/DC24NZ5L	NG 6	4/3 "Q" merkez	315	80	
4WE6Q60/AC110NZ5L	NG 6	4/3 "Q" merkez	315	80	
4WE6Q60/AC220NZ5L	NG 6	4/3 "Q" merkez	315	80	



ÜRÜN KODU PRODUCT CODE	ANMA ÖLÇÜSÜ /SIZE	TEKNİK ÖZELLİK TECHNICAL INF.	MAX BASINÇ (P,A,B) bar MAX PRESSURE (bar)	MAX DEBİ (LT/D) MAX FLOW (Lt/min)	TEKNİK RESMİ
BOBİNLİ YÖN KONTROL VALFLERİ / SELENOID DIRECTIONAL CONTROL VALVES					
4WE6R60/DC12NZ5L	NG 6	4/3 "R" merkez	315	80	
4WE6R60/DC24NZ5L	NG 6	4/3 "R" merkez	315	80	
4WE6R60/AC110NZ5L	NG 6	4/3 "R" merkez	315	80	
4WE6R60/AC220NZ5L	NG 6	4/3 "R" merkez	315	80	



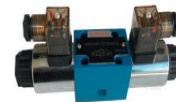
ÜRÜN KODU PRODUCT CODE	ANMA ÖLÇÜSÜ /SIZE	TEKNİK ÖZELLİK TECHNICAL INF.	MAX BASINÇ (P,A,B) bar MAX PRESSURE (bar)	MAX DEBİ (LT/D) MAX FLOW (Lt/min)	TEKNİK RESMİ
BOBİNLİ YÖN KONTROL VALFLERİ / SELENOID DIRECTIONAL CONTROL VALVES					
4WE6T60/DC12NZ5L	NG 6	4/3 "T" merkez	315	80	
4WE6T60/DC24NZ5L	NG 6	4/3 "T" merkez	315	80	
4WE6T60/AC110NZ5L	NG 6	4/3 "T" merkez	315	80	
4WE6T60/AC220NZ5L	NG 6	4/3 "T" merkez	315	80	



ÜRÜN KODU PRODUCT CODE	ANMA ÖLÇÜSÜ /SIZE	TEKNİK ÖZELLİK TECHNICAL INF.	MAX BASINÇ (P,A,B) bar MAX PRESSURE (bar)	MAX DEBİ (LT/D) MAX FLOW (Lt/min)	TEKNİK RESMİ
BOBİNLİ YÖN KONTROL VALFLERİ / SELENOID DIRECTIONAL CONTROL VALVES					
4WE6U60/DC12NZ5L	NG 6	4/3 "U" merkez	315	80	
4WE6U60/DC24NZ5L	NG 6	4/3 "U" merkez	315	80	
4WE6U60/AC110NZ5L	NG 6	4/3 "U" merkez	315	80	
4WE6U60/AC220NZ5L	NG 6	4/3 "U" merkez	315	80	



ÜRÜN KODU PRODUCT CODE	ANMA ÖLÇÜSÜ /SIZE	TEKNİK ÖZELLİK TECHNICAL INF.	MAX BASINÇ (P,A,B) bar MAX PRESSURE (bar)	MAX DEBİ (LT/D) MAX FLOW (Lt/min)	TEKNİK RESMİ
BOBİNLİ YÖN KONTROL VALFLERİ / SELENOID DIRECTIONAL CONTROL VALVES					
4WE6V60/DC12NZ5L	NG 6	4/3 "V" merkez	315	80	
4WE6V60/DC24NZ5L	NG 6	4/3 "V" merkez	315	80	
4WE6V60/AC110NZ5L	NG 6	4/3 "V" merkez	315	80	
4WE6V60/AC220NZ5L	NG 6	4/3 "V" merkez	315	80	



ÜRÜN KODU PRODUCT CODE	ANMA ÖLÇÜSÜ /SIZE	TEKNİK ÖZELLİK TECHNICAL INF.	MAX BASINÇ (P,A,B) bar MAX PRESSURE (bar)	MAX DEBİ (LT/D) MAX FLOW (Lt/min)	TEKNİK RESMİ
BOBİNLİ YÖN KONTROL VALFLERİ / SELENOID DIRECTIONAL CONTROL VALVES					
4WE6W60/DC12NZ5L	NG 6	4/3 "W" merkez	315	80	
4WE6W60/DC24NZ5L	NG 6	4/3 "W" merkez	315	80	
4WE6W60/AC110NZ5L	NG 6	4/3 "W" merkez	315	80	
4WE6W60/AC220NZ5L	NG 6	4/3 "W" merkez	315	80	



ÜRÜN KODU PRODUCT CODE	ANMA ÖLÇÜSÜ /SIZE	TEKNİK ÖZELLİK TECHNICAL INF.	MAX BASINÇ (P,A,B) bar MAX PRESSURE (bar)	MAX DEBİ (LT/D) MAX FLOW (Lt/min)	TEKNİK RESMİ
BOBİNLİ YÖN KONTROL VALFLERİ / SELENOID DIRECTIONAL CONTROL VALVES					
4WE10D30/DC12NZ5L	NG 10	4/2 "D" Tek Bobin	315	120	
4WE10D30/DC24NZ5L	NG 10	4/2 "D" Tek Bobin	315	120	
4WE10D30/AC110NZ5L	NG 10	4/2 "D" Tek Bobin	315	120	
4WE10D30/AC220NZ5L	NG 10	4/2 "D" Tek Bobin	315	120	

duoPower

Hidrolik Valfler Hydraulic Valves



ÜRÜN KODU PRODUCT CODE	ANMA ÖLÇÜSÜ /SIZE	TEKNİK ÖZELLİK TECHNICAL INF.	MAX BASINÇ (P,A,B) bar MAX PRESSURE (bar)	MAX DEBİ (LT/D) MAX FLOW (Lt/min)	TEKNİK RESMİ
BOBİNLİ YÖN KONTROL VALFLERİ / SELENOID DIRECTIONAL CONTROL VALVES					
4WE10E30/DC12NZ5L	NG 10	4/3 "K.M." merkez	315	120	
4WE10E30/DC24NZ5L	NG 10	4/3 "K.M." merkez	315	120	
4WE10E30/AC110NZ5L	NG 10	4/3 "K.M." merkez	315	120	
4WE10E30/AC220NZ5L	NG 10	4/3 "K.M." merkez	315	120	



ÜRÜN KODU PRODUCT CODE	ANMA ÖLÇÜSÜ /SIZE	TEKNİK ÖZELLİK TECHNICAL INF.	MAX BASINÇ (P,A,B) bar MAX PRESSURE (bar)	MAX DEBİ (LT/D) MAX FLOW (Lt/min)	TEKNİK RESMİ
BOBİNLİ YÖN KONTROL VALFLERİ / SELENOID DIRECTIONAL CONTROL VALVES					
4WE10J30/DC12NZ5L	NG 10	4/3 "A.B.T." merkez	315	120	
4WE10J30/DC24NZ5L	NG 10	4/3 "A.B.T." merkez	315	120	
4WE10J30/AC110NZ5L	NG 10	4/3 "A.B.T." merkez	315	120	
4WE10J30/AC220NZ5L	NG 10	4/3 "A.B.T." merkez	315	120	



ÜRÜN KODU PRODUCT CODE	ANMA ÖLÇÜSÜ /SIZE	TEKNİK ÖZELLİK TECHNICAL INF.	MAX BASINÇ (P,A,B) bar MAX PRESSURE (bar)	MAX DEBİ (LT/D) MAX FLOW (Lt/min)	TEKNİK RESMİ
BOBİNLİ YÖN KONTROL VALFLERİ / SELENOID DIRECTIONAL CONTROL VALVES					
4WE10G30/DC12NZ5L	NG 10	4/3 "A.M." merkez	315	120	
4WE10G30/DC24NZ5L	NG 10	4/3 "A.M." merkez	315	120	
4WE10G30/AC110NZ5L	NG 10	4/3 "A.M." merkez	315	120	
4WE10G30/AC220NZ5L	NG 10	4/3 "A.M." merkez	315	120	



ÜRÜN KODU PRODUCT CODE	ANMA ÖLÇÜSÜ /SIZE	TEKNİK ÖZELLİK TECHNICAL INF.	MAX BASINÇ (P,A,B) bar MAX PRESSURE (bar)	MAX DEBİ (LT/D) MAX FLOW (Lt/min)	TEKNİK RESMİ
BOBİNLİ YÖN KONTROL VALFLERİ / SELENOID DIRECTIONAL CONTROL VALVES					
4WE10H30/DC12NZ5L	NG 10	4/3 "H" merkez	315	120	
4WE10H30/DC24NZ5L	NG 10	4/3 "H" merkez	315	120	
4WE10H30/AC110NZ5L	NG 10	4/3 "H" merkez	315	120	
4WE10H30/AC220NZ5L	NG 10	4/3 "H" merkez	315	120	



ÜRÜN KODU PRODUCT CODE	ANMA ÖLÇÜSÜ /SIZE	TEKNİK ÖZELLİK TECHNICAL INF.	MAX BASINÇ (P,A,B) bar MAX PRESSURE (bar)	MAX DEBİ (LT/D) MAX FLOW (Lt/min)	TEKNİK RESMİ
BOBİNLİ YÖN KONTROL VALFLERİ / SELENOID DIRECTIONAL CONTROL VALVES					
4WE10F30/DC12NZ5L	NG 10	4/3 "F" merkez	315	120	
4WE10F30/DC24NZ5L	NG 10	4/3 "F" merkez	315	120	
4WE10F30/AC110NZ5L	NG 10	4/3 "F" merkez	315	120	
4WE10F30/AC220NZ5L	NG 10	4/3 "F" merkez	315	120	



ÜRÜN KODU PRODUCT CODE	ANMA ÖLÇÜSÜ /SIZE	TEKNİK ÖZELLİK TECHNICAL INF.	MAX BASINÇ (P,A,B) bar MAX PRESSURE (bar)	MAX DEBİ (LT/D) MAX FLOW (Lt/min)	TEKNİK RESMİ
BOBİNLİ YÖN KONTROL VALFLERİ / SELENOID DIRECTIONAL CONTROL VALVES					
4WE10L30/DC12NZ5L	NG 10	4/3 "L" merkez	315	120	
4WE10L30/DC24NZ5L	NG 10	4/3 "L" merkez	315	120	
4WE10L30/AC110NZ5L	NG 10	4/3 "L" merkez	315	120	
4WE10L30/AC220NZ5L	NG 10	4/3 "L" merkez	315	120	

duoPower

Hidrolik Valfler Hydraulic Valves



ÜRÜN KODU PRODUCT CODE	ANMA ÖLÇÜSÜ /SIZE	TEKNİK ÖZELLİK TECHNICAL INF.	MAX BASINÇ (P,A,B) bar MAX PRESSURE (bar)	MAX DEBİ (LT/D) MAX FLOW (Lt/min)	TEKNİK RESMİ
BOBİNLİ YÖN KONTROL VALFLERİ / SELENOID DIRECTIONAL CONTROL VALVES					
4WE10M30/DC12NZ5L	NG 10	4/3 "M" merkez	315	120	
4WE10M30/DC24NZ5L	NG 10	4/3 "M" merkez	315	120	
4WE10M30/AC110NZ5L	NG 10	4/3 "M" merkez	315	120	
4WE10M30/AC220NZ5L	NG 10	4/3 "M" merkez	315	120	
BOBİNLİ YÖN KONTROL VALFLERİ / SELENOID DIRECTIONAL CONTROL VALVES					
4WE10P30/DC12NZ5L	NG 10	4/3 "P" merkez	315	120	
4WE10P30/DC24NZ5L	NG 10	4/3 "P" merkez	315	120	
4WE10P30/AC110NZ5L	NG 10	4/3 "P" merkez	315	120	
4WE10P30/AC220NZ5L	NG 10	4/3 "P" merkez	315	120	
BOBİNLİ YÖN KONTROL VALFLERİ / SELENOID DIRECTIONAL CONTROL VALVES					
4WE10Q30/DC12NZ5L	NG 10	4/3 "Q" merkez	315	120	
4WE10Q30/DC24NZ5L	NG 10	4/3 "Q" merkez	315	120	
4WE10Q30/AC110NZ5L	NG 10	4/3 "Q" merkez	315	120	
4WE10Q30/AC220NZ5L	NG 10	4/3 "Q" merkez	315	120	
BOBİNLİ YÖN KONTROL VALFLERİ / SELENOID DIRECTIONAL CONTROL VALVES					
4WE10R30/DC12NZ5L	NG 10	4/3 "R" merkez	315	120	
4WE10R30/DC24NZ5L	NG 10	4/3 "R" merkez	315	120	
4WE10R30/AC110NZ5L	NG 10	4/3 "R" merkez	315	120	
4WE10R30/AC220NZ5L	NG 10	4/3 "R" merkez	315	120	
BOBİNLİ YÖN KONTROL VALFLERİ / SELENOID DIRECTIONAL CONTROL VALVES					
4WE10T30/DC12NZ5L	NG 10	4/3 "T" merkez	315	120	
4WE10T30/DC24NZ5L	NG 10	4/3 "T" merkez	315	120	
4WE10T30/AC110NZ5L	NG 10	4/3 "T" merkez	315	120	
4WE10T30/AC220NZ5L	NG 10	4/3 "T" merkez	315	120	
BOBİNLİ YÖN KONTROL VALFLERİ / SELENOID DIRECTIONAL CONTROL VALVES					
4WE10U30/DC12NZ5L	NG 10	4/3 "U" merkez	315	120	
4WE10U30/DC24NZ5L	NG 10	4/3 "U" merkez	315	120	
4WE10U30/AC110NZ5L	NG 10	4/3 "U" merkez	315	120	
4WE10U30/AC220NZ5L	NG 10	4/3 "U" merkez	315	120	

duoPower

Hidrolik Valfler Hydraulic Valves



ÜRÜN KODU PRODUCT CODE	ANMA ÖLÇÜSÜ /SIZE	TEKNİK ÖZELLİK TECHNICAL INF.	MAX BASINÇ (P,A,B) bar MAX PRESSURE (bar)	MAX DEBİ (LT/D) MAX FLOW (Lt/min)	TEKNİK RESMİ
BOBINLİ YÖN KONTROL VALFLERİ / SELENOID DIRECTIONAL CONTROL VALVES					
4WE10V30/DC12NZ5L	NG 10	4/3 "V" merkez	315	120	
4WE10V30/DC24NZ5L	NG 10	4/3 "V" merkez	315	120	
4WE10V30/AC110NZ5L	NG 10	4/3 "V" merkez	315	120	
4WE10V30/AC220NZ5L	NG 10	4/3 "V" merkez	315	120	



ÜRÜN KODU PRODUCT CODE	ANMA ÖLÇÜSÜ /SIZE	TEKNİK ÖZELLİK TECHNICAL INF.	MAX BASINÇ (P,A,B) bar MAX PRESSURE (bar)	MAX DEBİ (LT/D) MAX FLOW (Lt/min)	TEKNİK RESMİ
BOBINLİ YÖN KONTROL VALFLERİ / SELENOID DIRECTIONAL CONTROL VALVES					
4WE10W30/DC12NZ5L	NG 10	4/3 "W" merkez	315	120	
4WE10W30/DC24NZ5L	NG 10	4/3 "W" merkez	315	120	
4WE10W30/AC110NZ5L	NG 10	4/3 "W" merkez	315	120	
4WE10W30/AC220NZ5L	NG 10	4/3 "W" merkez	315	120	



ÜRÜN KODU PRODUCT CODE	ANMA ÖLÇÜSÜ /SIZE	TEKNİK ÖZELLİK TECHNICAL INF.	MAX BASINÇ (P,A,B) bar MAX PRESSURE (bar)	MAX DEBİ (LT/D) MAX FLOW (Lt/min)
BOBINLİ YÖN KONTROL VALFLERİ / SELENOID DIRECTIONAL CONTROL VALVES				
4WEH16G60/6EG24NETZ5L	NG 16	4/3 "A.M." merkez	315	300
4WEH16E60/6EG24NETZ5L	NG 16	4/3 "K.M." merkez	315	300
4WEH16J60/6EG24NETZ5L	NG 16	4/3 "A.B.T." merkez	315	300
4WEH16H60/6EG24NETZ5L	NG 16	4/3 "H" merkez	315	300



ÜRÜN KODU PRODUCT CODE	ANMA ÖLÇÜSÜ /SIZE	TEKNİK ÖZELLİK TECHNICAL INF.	MAX BASINÇ (P,A,B) bar MAX PRESSURE (bar)	MAX DEBİ (LT/D) MAX FLOW (Lt/min)
BOBINLİ YÖN KONTROL VALFLERİ / SELENOID DIRECTIONAL CONTROL VALVES				
4WEH25G60/6EG24NETZ5L	NG 25	4/3 "A.M." merkez	315	600
4WEH25E60/6EG24NETZ5L	NG 25	4/3 "K.M." merkez	315	600
4WEH25J60/6EG24NETZ5L	NG 25	4/3 "A.B.T." merkez	315	600
4WEH25H60/6EG24NETZ5L	NG 25	4/3 "H" merkez	315	600



ÜRÜN KODU PRODUCT CODE	ANMA ÖLÇÜSÜ /SIZE	TEKNİK ÖZELLİK TECHNICAL INF.	MAX BASINÇ (P,A,B) bar MAX PRESSURE (bar)	MAX DEBİ (LT/D) MAX FLOW (Lt/min)
BOBINLİ YÖN KONTROL VALFLERİ / SELENOID DIRECTIONAL CONTROL VALVES				
4WEH32G60/6EG24NETZ5L	NG 32	4/3 "A.M." merkez	315	1100
4WEH32E60/6EG24NETZ5L	NG 32	4/3 "K.M." merkez	315	1100
4WEH32J60/6EG24NETZ5L	NG 32	4/3 "A.B.T." merkez	315	1100
4WEH32H60/6EG24NETZ5L	NG 32	4/3 "H" merkez	315	1100



ÜRÜN KODU PRODUCT CODE	ANMA ÖLÇÜSÜ /SIZE	TEKNİK ÖZELLİK TECHNICAL INF.	MAX BASINÇ (P,A,B) bar MAX PRESSURE (bar)	MAX DEBİ (LT/D) MAX FLOW (Lt/min)
ÖN GERİLİM VALFLERİ / PREPRESSING VALVES				
NG16ETP4.5	NG 16	Ön Gerilim Valfi P hattına takılır / Connection on P Line	315	200
NG25ETP4.5	NG 25	Ön Gerilim Valfi P hattına takılır / Connection on P Line	315	300
NG32ETP4.5	NG 32	Ön Gerilim Valfi P hattına takılır / Connection on P Line	315	650

ÜRÜN KODU PRODUCT CODE	ANMA ÖLÇÜSÜ /SIZE	TEKNİK ÖZELLİK TECHNICAL INF.	MAX BASINÇ (P,A,B) bar MAX PRESSURE (bar)	MAX DEBİ (LT/D) MAX FLOW (Lt/min)
KOL KUMANDALI VALFLER / HAND LEVER DIRECTIONAL CONTROL VALVES (F=with detent)				
4WMM 6 D-6X/F	NG 6	4/2 "D" Kol - Kol - Detantlı valf / Lever - Lever	315	60
4WMM 6 D-6X	NG 6	4/2 "D" Kol - Yay - Yay dönüşlü / Lever - Spring	315	60
4WMM 6 E-6X/F	NG 6	4/3 "K.M" Kol - Kol - Detantlı valf / Lever - Lever	315	60
4WMM 6 E-6X	NG 6	4/3 "K.M" Kol - Yay - Yay dönüşlü / Lever - Spring	315	60
4WMM 6 H-6X/F	NG 6	4/3 "H" Kol - Kol - Detantlı valf / Lever - Lever	315	60
4WMM 6 H-6X	NG 6	4/3 "H" Kol - Yay - Yay dönüşlü / Lever - Spring	315	60
4WMM 6 J-6X/F	NG 6	4/3 "A.B.T." Kol - Kol - Detantlı valf / Lever - Lever	315	60
4WMM 6 J-6X	NG 6	4/3 "A.B.T." Kol - Yay - Yay dönüşlü / Lever - Spring	315	60
KARTRİÇ BASINÇ EMNİYET VALFLERİ / DIRECT OPERATED CARTRIDGE TYPE POPET PRESSURE RELIEF VALVES				
1/2" KARTRİÇ EMNİYET VALFİ	NG 6	Kartriç Basınç Emniyet Direkt uyarılı Popet tip / Block included	315	60
DBDH-6K-10-315	NG 6	Kartriç Basınç Emniyet Direkt uyarılı Popet tip / Block included	315	60
DBDH-6K-10-100	NG 6	Kartriç Basınç Emniyet Direkt uyarılı Popet tip / Block included	100	60
DBDH-6G-10-315 (BSP)	NG 6	Kartriç Basınç Emniyet Direkt uyarılı Popet tip / Block included	315	60
DBDH-10K-10-315	NG 10	Kartriç Basınç Emniyet Direkt uyarılı Popet tip / Block included	315	120
DBDH-10K-10-100	NG 10	Kartriç Basınç Emniyet Direkt uyarılı Popet tip / Block included	100	120
DBDH-10G-10-315 (BSP)	NG 10	Kartriç Basınç Emniyet Direkt uyarılı Popet tip / Block included	315	120
ARA PLAKA BASINÇ EMNİYET VALFLERİ / SANDWICH TYPE PRESSURE RELIEF VALVES				
ZDB 6 VP2-4X/315V	NG 6	P den Tanka Emniyet Ara Plaka Tip	315	60
ZDB 6 VA2-4X/315V	NG 6	A dan Tanka Emniyet Ara Plaka Tip	315	60
ZDB 6 VB2-4X/315V	NG 6	B dan Tanka Emniyet Ara Plaka Tip	315	60
Z2DB 6 VC2-4X/315V	NG 6	A,B den Tanka Emniyet Ara Plaka Tip	315	60
ZDB 10 VP2-4X/315V	NG 10	P den Tanka Emniyet Ara Plaka Tip	315	100
ZDB 10 VA2-4X/315V	NG 10	A dan Tanka Emniyet Ara Plaka Tip	315	100
ZDB 10 VB2-4X/315V	NG 10	B dan Tanka Emniyet Ara Plaka Tip	315	100
Z2DB 10 VC2-4X/315V	NG 10	A,B den Tanka Emniyet Ara Plaka Tip	315	100
PLEYT TİPİ BASINÇ EMNİYET VALFLERİ / PILOT OPERATED PLATE TYPE PRESSURE RELIEF VALVES				
DB-10-B-1-5X-315	NG 10	Pilot Uyarılı Pleyt Tipi Basınç Emniyet Valfi	315	250
DB-20-B-1-5X-315	NG 20	Pilot Uyarılı Pleyt Tipi Basınç Emniyet Valfi	315	500
DB-30-B-1-5X-315	NG 30	Pilot Uyarılı Pleyt Tipi Basınç Emniyet Valfi	315	650
PLEYT TİPİ BOŞALTMALI EMNİYET VALFLERİ / PILOT OPERATED PLATE TYPE PRESSURE RELIEF VALVES WITH UNLOADING FUNCTION				
DBW-10-B-1-5X-315-6EG24N9Z4	NG 10	Pilot Uyarılı Pleyt Tipi Boşaltmalı Emniyet Valfi	315	250
DBW-20-B-1-5X-315-6EG24N9Z4	NG 20	Pilot Uyarılı Pleyt Tipi Boşaltmalı Emniyet Valfi	315	500
DBW-30-B-1-5X-315-6EG24N9Z4	NG 30	Pilot Uyarılı Pleyt Tipi Boşaltmalı Emniyet Valfi	315	650



ÜRÜN KODU PRODUCT CODE	ANMA ÖLÇÜSÜ /SIZE	TEKNİK ÖZELLİK TECHNICAL INF.	MAX BASINÇ (P,A,B) bar MAX PRESSURE (bar)	MAX DEBİ (LT/D) MAX FLOW (Lt/min)
ARA PLAKA BASINÇ DÜŞÜRÜCÜ VALFLERİ / SANDWICH TYPE PRESSURE REDUCING VALVES				
ZDR 6 DP1-3X/75YMV	NG 6	Ara Plaka Direkt Uyarılı Basınç Düşürücü Valf	210	30
ZDR 6 DP1-3X/210YMV	NG 6	Ara Plaka Direkt Uyarılı Basınç Düşürücü Valf	210	30
ZDR 6 DA1-3X/210YV	NG 6	Ara Plaka Direkt Uyarılı Basınç Düşürücü Valf	210	30
ZDR 6 DB1-3X/210YV	NG 6	Ara Plaka Direkt Uyarılı Basınç Düşürücü Valf	210	30
ZDR 10 DP1-4X/210YM	NG 10	Ara Plaka Direkt Uyarılı Basınç Düşürücü Valf	210	50
ZDR 10 DA1-4X/210YV	NG 10	Ara Plaka Direkt Uyarılı Basınç Düşürücü Valf	210	50
ZDR 10 DB1-4X/210YV	NG 10	Ara Plaka Direkt Uyarılı Basınç Düşürücü Valf	210	50
PLEYT TİPİ BASINÇ DÜŞÜRÜCÜ VALFLERİ / PILOT OPERATED PLATE TYPE PRESSURE REDUCING VALVES				
DR-10-1-3X/315Y	NG 10	Pleyt Tipi Basınç Düşürücü Pilot Uyarılı Valf	315	80
DR-20-1-3X/315Y	NG 20	Pleyt Tipi Basınç Düşürücü Pilot Uyarılı Valf	315	200
DR-30-1-3X/315Y	NG 30	Pleyt Tipi Basınç Düşürücü Pilot Uyarılı Valf	315	300
AKÜ VALFLERİ / PILOT OPERATED ACCUMULATOR CHARGING VALVES				
DA-10-1-3X/160	NG 10	Akü Doldurma Valfi Pilot Uyarılı	160	40
DA-20-1-3X/160	NG 20	Akü Doldurma Valfi Pilot Uyarılı	160	100
DA-30-1-3X/160	NG 30	Akü Doldurma Valfi Pilot Uyarılı	160	250
DA-10-1-3X/315	NG 10	Akü Doldurma Valfi Pilot Uyarılı	315	40
DA-20-1-3X/315	NG 20	Akü Doldurma Valfi Pilot Uyarılı	315	100
DA-30-1-3X/315	NG 30	Akü Doldurma Valfi Pilot Uyarılı	315	250
BOŞALTMALI TİP AKÜ VALFLERİ / PILOT OPERATED DUMP TYPE ACCUMULATOR VALVES				
DAW-10-B-1-3X-315-6EG24N9Z4	NG 10	Boşaltmalı Tip Akü Doldurma Valfi Pilot Uyarılı	315	40
DAW-20-B-1-3X-315-6EG24N9Z4	NG 20	Boşaltmalı Tip Akü Doldurma Valfi Pilot Uyarılı	315	100
DAW-30-B-1-3X-315-6EG24N9Z4	NG 30	Boşaltmalı Tip Akü Doldurma Valfi Pilot Uyarılı	315	250
PLEYT TİPİ BASINÇ SIRALAMA VALFLERİ / PLATE TYPE PRESSURE SEQUENCE VALVES				
DZ-10-1-3X-210	NG 10	Pleyt Tipi Basınç Sıralama Valfi Pilot Uyarılı	210	150
DZ-20-1-3X-210	NG 20	Pleyt Tipi Basınç Sıralama Valfi Pilot Uyarılı	210	300
DZ-30-1-3X-210	NG 30	Pleyt Tipi Basınç Sıralama Valfi Pilot Uyarılı	210	450
ARA PLAKA HIZLI YAVAŞ VALFLERİ / MST SERIES MODULAR SELENOID THROTTLE VALVE				
MST-02-A-D24-10	NG 6	Ara Plaka "A" Hattı "out" Hızlı / Yavaş Valfi / Port "A" out	250	20
MST-02-B-D24-10	NG 6	Ara Plaka "B" Hattı "out" Hızlı / Yavaş Valfi / Port "B" out	250	20
MST-03-A-D24-10	NG 10	Ara Plaka "A" Hattı "out" Hızlı / Yavaş Valfi / Port "A" out	250	45
MST-03-B-D24-10	NG 10	Ara Plaka "B" Hattı "out" Hızlı / Yavaş Valfi / Port "B" out	250	45

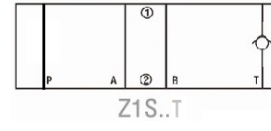
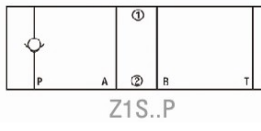
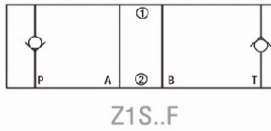
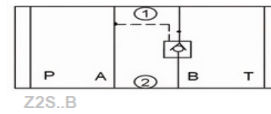
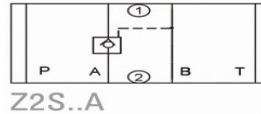
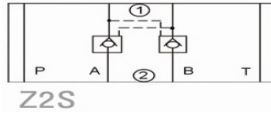




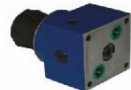
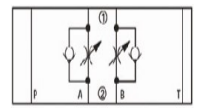
ÜRÜN KODU PRODUCT CODE	ANMA ÖLÇÜSÜ /SIZE	TEKNİK ÖZELLİK TECHNICAL INF.	MAX BASINÇ (P,A,B) bar MAX PRESSURE (bar)	MAX DEBİ (LT/D) MAX FLOW (Lt/min)
ARA PLAKA BALANS VALFLERİ / SANDWICH PLATE BALANCE VALVES				
MCS-02-A-K-3-20	NG 6	Ara Plaka "A" Hattı Çıkışı Yönü Balans Valfi	250	35
MCS-02-B-K-3-20	NG 6	Ara Plaka "B" Hattı Çıkışı Yönü Balans Valfi	250	35



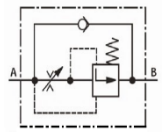
ÜRÜN KODU PRODUCT CODE	ANMA ÖLÇÜSÜ /SIZE	TEKNİK ÖZELLİK TECHNICAL INF.	MAX BASINÇ (P,A,B) bar MAX PRESSURE (bar)	MAX DEBİ (LT/D) MAX FLOW (Lt/min)
ARA PLAKA İKİZ ÇEKVALFLER / SANDWICH PLATE PILOT OPERATED CHECK VALVES				
Z2S 6-1-6X/	NG 6	Ara Plaka Pilot Uyarılı İkiz Çek Valf "A.B." Hattı	315	40
Z2S 6A-1-6X/	NG 6	Ara Plaka Pilot Uyarılı İkiz Çek Valf "A" Hattı	315	40
Z2S 6B-1-6X/	NG 6	Ara Plaka Pilot Uyarılı İkiz Çek Valf "B" Hattı	315	40
Z2S 10-1-3X/	NG 10	Ara Plaka Pilot Uyarılı İkiz Çek Valf "A.B." Hattı	315	100
Z2S 10A-1-3X/	NG 10	Ara Plaka Pilot Uyarılı İkiz Çek Valf "A" Hattı	315	100
Z2S 10B-1-3X/	NG 10	Ara Plaka Pilot Uyarılı İkiz Çek Valf "B" Hattı	315	100
Z2S 16-1-4X/	NG 16	Ara Plaka Pilot Uyarılı İkiz Çek Valf "A.B." Hattı	315	200
Z2S 22-1-4X/	NG 25	Ara Plaka Pilot Uyarılı İkiz Çek Valf "A.B." Hattı	315	360
Z1S 6 P1-3X/V	NG 6	Ara Plaka "P" tipi çekvalf	315	40
Z1S 6 T1-3X/V	NG 6	Ara Plaka "T" tipi çekvalf	315	40
Z1S 6 F1-3X/V	NG 6	Ara Plaka "F" tipi çekvalf	315	40
Z1S 10 P1-3X/V	NG 10	Ara Plaka "P" tipi çekvalf	315	100
Z1S 10 F1-3X/V	NG 10	Ara Plaka "F" tipi çekvalf	315	100



ÜRÜN KODU PRODUCT CODE	ANMA ÖLÇÜSÜ /SIZE	TEKNİK ÖZELLİK TECHNICAL INF.	MAX BASINÇ (P,A,B) bar MAX PRESSURE (bar)	MAX DEBİ (LT/D) MAX FLOW (Lt/min)
ARA PLAKA İKİZ HIZAYAR VALFLERİ / SANDWICH PLATE DOUBLE FLOW CONTROL VALVE				
Z2FS 6-2-4X/2QV	NG 6	Ara Plaka Tip Çek valfli İkiz Hız ayar Valfi "A.B." Hattı	315	80
Z2FS 10-5-3X/S2V	NG 10	Ara Plaka Tip Çek valfli İkiz Hız ayar Valfi "A.B." Hattı	315	120
Z2FS 16-31/S2	NG 16	Ara Plaka Tip Çek valfli İkiz Hız ayar Valfi "A.B." Hattı	315	250
Z2FS 22-3X/S2	NG 25	Ara Plaka Tip Çek valfli İkiz Hız ayar Valfi "A.B." Hattı	315	350



ÜRÜN KODU PRODUCT CODE	AYAR VERSİYONU ADJUSTMENT VERSION	ANMA ÖLÇÜSÜ SIZE	MAX DEBİ (LT/D) MAX FLOW (Lt/min)	MAX BASINÇ (P,A,B) bar MAX PRESSURE (bar)	ÇEKVALF
HASSAS AYAR VALFLERİ PRECISION FLOW CONTROL VALVES 2FRM 5					
2 FRM 5 - 31/0,2QV	EI Tamburlu ve Anahtarlı	NG5	0,2	210	Var
2 FRM 5 - 31/0,6QV	EI Tamburlu ve Anahtarlı	NG5	0,6	210	Var
2 FRM 5 - 31/1,2QV	EI Tamburlu ve Anahtarlı	NG5	1,2	210	Var
2 FRM 5 - 31/3QV	EI Tamburlu ve Anahtarlı	NG5	3	210	Var
2 FRM 5 - 31/6QV	EI Tamburlu ve Anahtarlı	NG5	6	210	Var
2 FRM 5 - 31/10QV	EI Tamburlu ve Anahtarlı	NG5	10	210	Var
2 FRM 5 - 31/15QV	EI Tamburlu ve Anahtarlı	NG5	15	210	Var





ÜRÜN KODU PRODUCT CODE	AYAR VERSİYONU ADJUSTMENT VERSION	ANMA ÖLÇÜSÜ SIZE	MAX DEBİ (LT/D) MAX FLOW (Lt/min)	MAX BASINÇ (P,A,B) bar MAX PRESSURE (bar)	ÇEKVALF
HASSAS AYAR VALFLERİ PRECISION FLOW CONTROL VALVES 2FRM 6					
2 FRM 6 B36 - 3X/1,5QRV	El Tamburlu ve Anahtarlı	NG6	1,5	315	Var
2 FRM 6 B36 - 3X/3QRV	El Tamburlu ve Anahtarlı	NG6	3	315	Var
2 FRM 6 B36 - 3X/6QRV	El Tamburlu ve Anahtarlı	NG6	6	315	Var
2 FRM 6 B36 - 3X/10QRV	El Tamburlu ve Anahtarlı	NG6	10	315	Var
2 FRM 6 B36 - 3X/16QRV	El Tamburlu ve Anahtarlı	NG6	16	315	Var
2 FRM 6 B36 - 3X/25QRV	El Tamburlu ve Anahtarlı	NG6	25	315	Var
2 FRM 6 B36 - 3X/32QRV	El Tamburlu ve Anahtarlı	NG6	32	315	Var



ÜRÜN KODU PRODUCT CODE	AYAR VERSİYONU ADJUSTMENT VERSION	ANMA ÖLÇÜSÜ SIZE	MAX DEBİ (LT/D) MAX FLOW (Lt/min)	MAX BASINÇ (P,A,B) bar MAX PRESSURE (bar)	ÇEKVALF
HASSAS AYAR VALFLERİ PRECISION FLOW CONTROL VALVES 2FRM 10					
2 FRM 10 - 2X/25L	El Tamburlu ve Anahtarlı	NG10	25	315	Var
2 FRM 10 - 2X/50L	El Tamburlu ve Anahtarlı	NG10	50	315	Var



ÜRÜN KODU PRODUCT CODE	AYAR VERSİYONU ADJUSTMENT VERSION	ANMA ÖLÇÜSÜ SIZE	MAX DEBİ (LT/D) MAX FLOW (Lt/min)	MAX BASINÇ (P,A,B) bar MAX PRESSURE (bar)	ÇEKVALF
HASSAS AYAR VALFLERİ PRECISION FLOW CONTROL VALVES 2FRM 16					
2 FRM 16 - 32/100L	El Tamburlu ve Anahtarlı	NG16	100	315	Var
2 FRM 16 - 21/160L	El Tamburlu ve Anahtarlı	NG16	160	315	Var



ÜRÜN KODU PRODUCT CODE	AYAR VERSİYONU ADJUSTMENT VERSION	ANMA ÖLÇÜSÜ SIZE	MAX DEBİ (LT/D) MAX FLOW (Lt/min)	MAX BASINÇ (P,A,B) bar MAX PRESSURE (bar)
AKIŞ DOĞRULTUCULAR FLOW RECTIFIER Z4S				
Z4S 5 - 1X	Ara Plaka Tip	NG5	16	210
Z4S 6 - 1X/V	Ara Plaka Tip	NG6	25	315
Z4S 10 - 1X/V	Ara Plaka Tip	NG10	150	315
Z4S 16 - 1X/V	Ara Plaka Tip	NG16	160	315



ÜRÜN KODU PRODUCT CODE	ANMA ÖLÇÜSÜ SIZE	TEKNİK ÖZELLİK TECHNICAL INF	MAX DEBİ (LT/D) MAX FLOW (Lt/min)	MAX BASINÇ (P,A,B) bar MAX PRESSURE (bar)	ÇEKVALF
HAT TİPİ HIZ AYAR VALFLERİ / IN-LINE FLOW CONTROL VALVES					
DRV-06	1/8"	Hat Tipi Hız ayar Valfi	6	315	
DRV-08	1/4"	Hat Tipi Hız ayar Valfi	15	315	
DRV-10	3/8"	Hat Tipi Hız ayar Valfi	30	315	
DRV-12	1/2"	Hat Tipi Hız ayar Valfi	50	315	
DRV-16	3/4"	Hat Tipi Hız ayar Valfi	140	315	
DRV-20	1"	Hat Tipi Hız ayar Valfi	200	315	
DRV-25	1 1/4"	Hat Tipi Hız ayar Valfi	300	315	
DRV-30	1 1/2"	Hat Tipi Hız ayar Valfi	400	315	
DRV-40	2"	Hat Tipi Hız ayar Valfi	500	315	



ÜRÜN KODU PRODUCT CODE	ANMA ÖLÇÜSÜ SIZE	TEKNİK ÖZELLİK TECHNICAL INF	MAX DEBİ (LT/D) MAX FLOW (Lt/min)	MAX BASINÇ (P,A,B) bar MAX PRESSURE (bar)	ÇEKVALF
HAT TİPİ ÇEKVALFLER / IN-LINE CHECK VALVES					
GA-01 A	1/4"	Hat Tipi Çekvalf	20	315	
GA-02 A	3/8"	Hat Tipi Çekvalf	40	315	
GA-03 A	1/2"	Hat Tipi Çekvalf	60	315	
GA-04 A	3/4"	Hat Tipi Çekvalf	130	315	
GA-06 A	1"	Hat Tipi Çekvalf	200	315	
GA-10 A	1 1/4"	Hat Tipi Çekvalf	350	315	
GA-12 A	1 1/2"	Hat Tipi Çekvalf	450	315	

duoPower

Hidrolik Valfler Hydraulic Valves

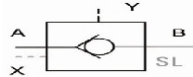


ÜRÜN KODU PRODUCT CODE	ANMA ÖLÇÜSÜ SIZE	TEKNİK ÖZELLİK TECHNICAL INF
BOBİNLER / SELENOİD		
CTD/H02-D12VN	NG 6	Valf Bobini 6X Serisi (12VDC)
CTD/H02-D24VN	NG 6	Valf Bobini 6X Serisi (24VDC)
CTD/H02-A110VN	NG 6	Valf Bobini 6X Serisi (110VAC)
CTD/H02-A220VN	NG 6	Valf Bobini 6X Serisi (220VAC)
CTD/H03-D12VN	NG 10	Valf Bobini 3X Serisi (12VDC)
CTD/H03-D24VN	NG 10	Valf Bobini 3X Serisi (24VDC)
CTD/H03-A110VN	NG 10	Valf Bobini 3X Serisi (110VAC)
CTD/H03-A220VN	NG 10	Valf Bobini 3X Serisi (220VAC)

ÜRÜN KODU PRODUCT CODE	ANMA ÖLÇÜSÜ SIZE	BAĞLANTI TİPİ CONNECTION TYPE	TEKNİK ÖZELLİK TECHNICAL INF	MAX DEBİ (LT/D) MAX FLOW (L/min)	MAX BASINÇ (P,A,B) bar MAX PRESSURE (bar)
LOJİK VALFLER / LOGIC VALVES					
LC 16 A10D-7X/	NG 16	Kartriç Tip	%50 yastıklamalı-1 bar - 50% cushion	160	420
LC 16 A40D-7X/	NG 16	Kartriç Tip	%50 yastıklamalı- 4 bar - 50% cushion	160	420
LC 16 B10E-7X/	NG 16	Kartriç Tip	%7 yastıklamasız-1 bar - 7% cushion	220	420
LC 25 A10D-7X/	NG 25	Kartriç Tip	%50 yastıklamalı-1 bar - 50% cushion	470	420
LC 25 A40D-7X/	NG 25	Kartriç Tip	%50 yastıklamalı- 4 bar - 50% cushion	470	420
LC 25 B10E-7X/	NG 25	Kartriç Tip	%7 yastıklamasız-1 bar - 7% cushion	570	420
LC 32 A40D-7X/	NG 32	Kartriç Tip	%50 yastıklamalı- 4 bar - 50% cushion	740	420
LC 32 B10E-7X/	NG 32	Kartriç Tip	%7 yastıklamasız-1 bar - 7% cushion	800	420
LC 40 A40E-7X/	NG 40	Kartriç Tip	%50 yastıklamasız-4 bar - 50% cushion	1500	420
LC 50 A40E-7X/	NG 50	Kartriç Tip	%50 yastıklamasız-4 bar - 50% cushion	2750	420
LC 63 A40E-7X/	NG 63	Kartriç Tip	%50 yastıklamasız-4 bar - 50% cushion	3000	420



ÜRÜN KODU PRODUCT CODE	ANMA ÖLÇÜSÜ SIZE	BAĞLANTI TİPİ CONNECTION TYPE	TEKNİK ÖZELLİK TECHNICAL INF	MAX DEBİ (LT/D) MAX FLOW (L/min)	MAX BASINÇ (P,A,B) bar MAX PRESSURE (bar)
HAT TİPİ PİLOT UYARILI ÇEK VALFLER / IN-LINE PİLOT OPERATED CHECK VALVES					
SV 10 GA1-3X	1/2'	Hat Tipi	Sızıntı Hattı Yok - No Leakage Port	120	120
SV 20 GA1-3X	1'	Hat Tipi	Sızıntı Hattı Yok - No Leakage Port	300	300
SV 30 GA1-3X	1 1/2'	Hat Tipi	Sızıntı Hattı Yok - No Leakage Port	500	500
SL 10 GA1-3X	1/2'	Hat Tipi	Sızıntı Hattı Var - Leakage Port	120	120
SL 20 GA1-3X	1'	Hat Tipi	Sızıntı Hattı Var - Leakage Port	300	300
SL 30 GA1-3X	1 1/2'	Hat Tipi	Sızıntı Hattı Var - Leakage Port	500	500



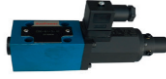
ÜRÜN KODU PRODUCT CODE	ANMA ÖLÇÜSÜ SIZE	BAĞLANTI TİPİ CONNECTION TYPE	TEKNİK ÖZELLİK TECHNICAL INF	MAX DEBİ (LT/D) MAX FLOW (L/min)	MAX BASINÇ (P,A,B) bar MAX PRESSURE (bar)
PLEYT TİPİ PİLOT UYARILI ÇEK VALFLER / PLAİT TYPE PİLOT OPERATED CHECK VALVES					
SV 10 PA1-3X	NG 10	Pleyt Tipi	Sızıntı Hattı Yok - No Leakage Port	120	120
SV 20 PA1-3X	NG 20	Pleyt Tipi	Sızıntı Hattı Yok - No Leakage Port	300	300
SV 30 PA1-3X	NG 30	Pleyt Tipi	Sızıntı Hattı Yok - No Leakage Port	500	500
SL 10 PA1-3X	NG 10	Pleyt Tipi	Sızıntı Hattı Var - Leakage Port	120	120
SL 20 PA1-3X	NG 20	Pleyt Tipi	Sızıntı Hattı Var - Leakage Port	300	300
SL 30 PA1-3X	NG 30	Pleyt Tipi	Sızıntı Hattı Var - Leakage Port	500	500



ÜRÜN KODU PRODUCT CODE	ANMA ÖLÇÜSÜ SIZE	TEKNİK ÖZELLİK TECHNICAL INF	MAX DEBİ (LT/D) MAX FLOW (L/min)	MAX BASINÇ (P,A,B) bar MAX PRESSURE (bar)
ORANSAL EMNİYET VALFLER / PROPORTİONAL PRESSURE RELİEF VALVES				
EDG-01-3-10 (DBET-5X)	NG 6	Pleyt Tipi Oransal Basınç Emniyet Valfi	2	250
EBG-03-3-L-10(DBE 10)	NG 10	Pleyt Tipi Oransal Basınç Emniyet Valfi	150	250
EBG-06-3-L-10(DBE 20)	NG 20	Pleyt Tipi Oransal Basınç Emniyet Valfi	300	250
EFBG-03-125-3-20 (PQ)	NG 10	P-Q Blok (Elektronik Kartsız)	125	210



ÜRÜN KODU PRODUCT CODE	ANMA ÖLÇÜSÜ /SIZE	BAĞLANTI	MAX BASINÇ / MAX PRESSURE (Bar)	MAX FLOW (Lt/min) DEBİ (l/dk.)
ORANSAL BASINÇ EMNİYET (Relief) VALFİ / PROPORTIONAL PRESSURE RELIEF VALVES				
DBET-5X/315 G24K4M SO1	NG 6	PLEYT TİPİ	315	2
DBET-5X/80 G24K4M SO1	NG 6	PLEYT TİPİ	80	2
DBE 10-3X/315YM	NG 10	PLEYT TİPİ	315	200
DBE 20-3X/315YM	NG 20	PLEYT TİPİ	315	400
DBE 30-3X/315YM	NG 30	PLEYT TİPİ	315	600
3DREP 6C-1X/25A24NZ4	NG 6	PLEYT TİPİ	15	25
3DREP 6C-1X/16A24NZ4	NG 6	PLEYT TİPİ	15	16



ÜRÜN KODU PRODUCT CODE	ANMA ÖLÇÜSÜ /SIZE	TEKNİK ÖZELLİK TECHNICAL INF.	MAX. BASINÇ / MAX PRESSURE (Bar)	MAX. FLOW (Lt/min) DEBİ (l/dk.)	BASINÇ ARALIĞI (Bar)	BAĞLANTI
ORANSAL YÖN KONTROL VALFİ / PROPORTIONAL DIRECTIONAL VALVES						
4WRAE 6E 20-1X/24NZ4M	NG 6	Kapalı Merkez Geri Beslemesiz /No feedback	315	17	315	Pleyt Tipi
4WRAE 6E 10-1X/24NZ4M	NG 6	Kapalı Merkez Geri Beslemesiz /No feedback	315	13	315	Pleyt Tipi
4WRAE 6E 6-1X/24NZ4M	NG 6	Kapalı Merkez Geri Beslemesiz /No feedback	315	8	315	Pleyt Tipi
4WRAE 6W 20-1X/24NZ4M	NG 6	W Tipi Merkez Geri Beslemesiz /No feedback	315	17	315	Pleyt Tipi
4WRAE 6W 10-1X/24NZ4M	NG 6	W Tipi Merkez Geri Beslemesiz /No feedback	315	13	315	Pleyt Tipi
4WRAE 6W 6-1X/24NZ4M	NG 6	W Tipi Merkez Geri Beslemesiz /No feedback	315	8	315	Pleyt Tipi
4WRAE 10E 40-1X/24NZ4M	NG 10	Kapalı Merkez Geri Beslemesiz /No feedback	315	50	315	Pleyt Tipi
4WRAE 10E 20-1X/24NZ4M	NG 10	Kapalı Merkez Geri Beslemesiz /No feedback	315	27	315	Pleyt Tipi
4WRAE 10E 10-1X/24NZ4M	NG 10	Kapalı Merkez Geri Beslemesiz /No feedback	315	18	315	Pleyt Tipi
4WRAE 10W 40-1X/24NZ4M	NG 10	W Tipi Merkez Geri Beslemesiz /No feedback	315	50	315	Pleyt Tipi
4WRAE 10W 20-1X/24NZ4M	NG 10	W Tipi Merkez Geri Beslemesiz /No feedback	315	27	315	Pleyt Tipi
4WRAE 10W 10-1X/24NZ4M	NG 10	W Tipi Merkez Geri Beslemesiz /No feedback	315	18	315	Pleyt Tipi
4WREE 6E 32-1X/24Z4/V	NG 6	Kapalı Merkez Geri Beslemeli /Feedback	315	32	315	Pleyt Tipi
4WREE 6E 16-1X/24Z4/V	NG 6	Kapalı Merkez Geri Beslemeli /Feedback	315	16	315	Pleyt Tipi
4WREE 6E 8-1X/24Z4/V	NG 6	Kapalı Merkez Geri Beslemeli /Feedback	315	8	315	Pleyt Tipi
4WREE 6W 32-1X/24Z4/V	NG 6	W Tipi Merkez Geri Beslemeli /Feedback	315	23	315	Pleyt Tipi
4WREE 6W 16-1X/24Z4/V	NG 6	W Tipi Merkez Geri Beslemeli /Feedback	315	16	315	Pleyt Tipi
4WREE 6W 8-1X/24Z4/V	NG 6	W Tipi Merkez Geri Beslemeli /Feedback	315	8	315	Pleyt Tipi
4WREE 10E 64-1X/24Z4/V	NG 10	Kapalı Merkez Geri Beslemeli /Feedback	315	64	315	Pleyt Tipi
4WREE 10E 32-1X/24Z4/V	NG 10	Kapalı Merkez Geri Beslemeli /Feedback	315	32	315	Pleyt Tipi
4WREE 10E 16-1X/24Z4/V	NG 10	Kapalı Merkez Geri Beslemeli /Feedback	315	16	315	Pleyt Tipi
4WREE 10W 64-1X/24Z4/V	NG 10	W Tipi Merkez Geri Beslemeli /Feedback	315	64	315	Pleyt Tipi
4WREE 10W 32-1X/24Z4/V	NG 10	W Tipi Merkez Geri Beslemeli /Feedback	315	32	315	Pleyt Tipi
4WREE 10W 16-1X/24Z4/V	NG 10	W Tipi Merkez Geri Beslemeli /Feedback	315	16	315	Pleyt Tipi

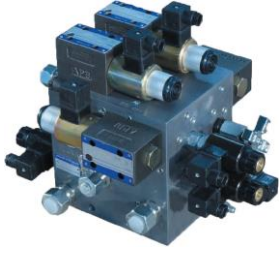


ÜRÜN KODU PRODUCT CODE	ANMA ÖLÇÜSÜ /SIZE	TEKNİK ÖZELLİK TECHNICAL INF.	MAX. BASINÇ / MAX PRESSURE (Bar)	MAX. FLOW (Lt/min) DEBİ (l/dk.)	BASINÇ ARALIĞI (Bar)	BAĞLANTI
ORANSAL YÖN KONTROL VALFİ / PROPORTIONAL DIRECTIONAL VALVES						
4WRZ 16E 150-3X/6A24NETK4/V	NG 16	Kapalı Merkez Geri Beslemesiz / No Feedback	350	150	350	Pleyt Tip
4WRZ 16W 150-3X/6A24NETK4/V	NG 16	W Merkez Geri Beslemesiz / No Feedback	350	150	350	Pleyt Tip
4WRZ 25E 325-3X/6A24NETK4/V	NG 25	Kapalı Merkez Geri Beslemesiz / No Feedback	350	325	350	Pleyt Tip
4WRZ 25W 150-3X/6A24NETK4/V	NG 25	W Merkez Geri Beslemesiz / No Feedback	350	325	350	Pleyt Tip
4WRZ 32E 520-3X/6A24NETK4/V	NG 32	Kapalı Merkez Geri Beslemesiz / No Feedback	350	520	350	Pleyt Tip



duoPower

Hidrolik Ürünler Hydraulic Products



Hidrolik Blok

Hydraulic Block



Hidrolik Ünite

Hydraulic Unit



Hidrolik Ünite

Hydraulic Unit



Kumanda Kolu
Command Controls



Popet Valf

Poppet Valves



A10V İç Grup

A10V Inner Group



A10VO Rotary



Aksesuar

Accessories



25V Kartriç

25V Cartridge



Hidrolik Rakorlar

Hydraulic Fittings



Hidrolik Silindir

Hydraulic Cylinder



Akü

Accumulators



Filtre

Filters

Hidrolik ünite imalatı, proje sistem dizaynı

Hidrolik silindir imalatı

A7V Pistonlu değişken debili pompalar

A10V Pistonlu değişken debili pistonlu pompalar

45V Paletli sabit debili pompalar

Dişli tip sabit debili pompalar

A7V Pistonlu sabit debili hidromotorlar

Orbit tip sabit debili hidromotorlar

Hydraulic power-pack manufacturing, project system design.

Hydraulic cylinder manufacturing.

A7V Variable Piston Pumps

A10V Variable Piston Pumps

45V Vane Pumps

Gear Pumps

A7V Constant Hydromotor

Orbital Hydromotor

NG 6-32 Yön kontrol valfleri
Oransal yön kontrol valfleri
Oransal basınç kontrol valfleri
Pleyt tipi basınç valfleri
Pleyt tipi çek valfler
Hız ayar valfleri
Hidrolik balonlu ve
diyafram tip aküler
Hidrolik havalı tip ve
sulu tip soğutucular

NG 6-32 Directional Control Valve, Proportional Directional Control Valve
Proportional Pressure Control Valve, Pleyt Type Pressure Valves
Pleyt Type Check Valves, Flow Control Valves, Hydraulic Bladder and
Diaphragm Accumulators
Hydraulic Air and Water Heat Exchanger

duoPower

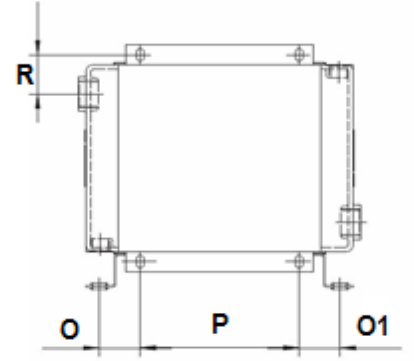
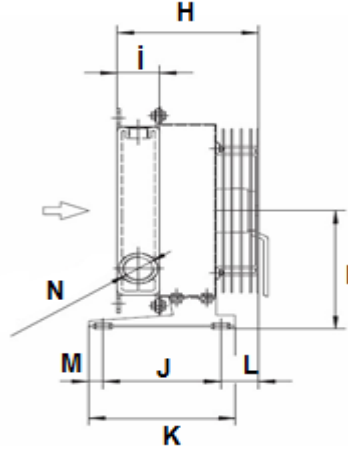
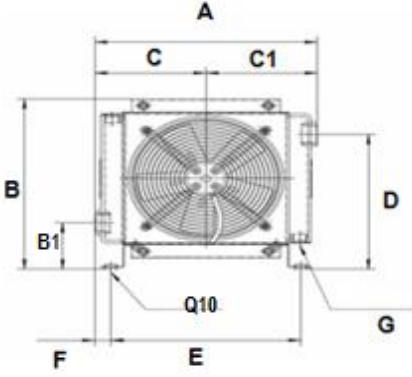
Havalı Soğutucular Air Heat Exchangers



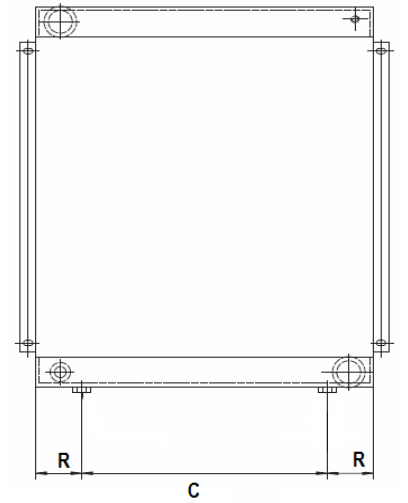
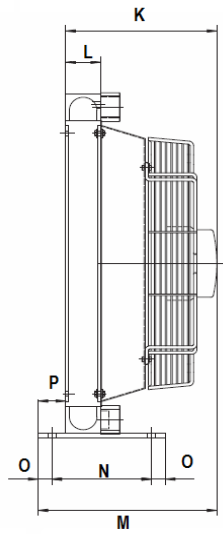
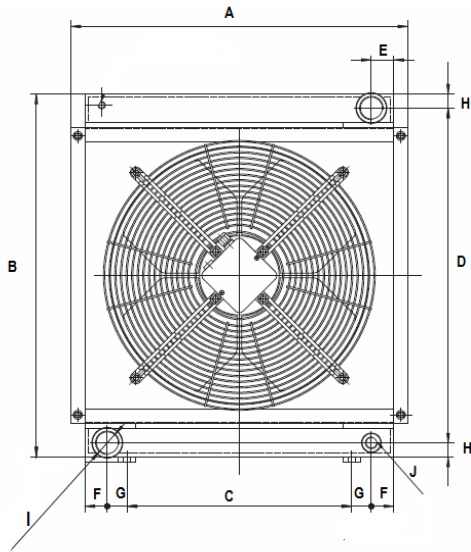
ÜRÜN KODU PRODUCT CODE	$\Delta t = 20\text{ }^{\circ}\text{C}$ de Soğutma kcal / saat Cooling Kcal / hr	$\Delta t = 30\text{ }^{\circ}\text{C}$ de kcal / saat kcal / hr	Max Yağ Debisi litre / dak Max. Oil lt / mn	Maks. Basınç Bar Max. Pressure Bar	Yağ Bağlantı Ölçüsü Oil Connection dia.
Havalı Soğutucular – Air Heat Exchangers					
4010 TK 24 V DC	940	1400	40	24	1/2" BSP
4010 TK 220 V AC	940	1400	40	24	1/2" BSP
4015 TK 24 V DC	2330	4100	80	24	1" BSP
4015 TK 220 V AC	2330	4100	80	24	1" BSP
4020 TK 24 V DC	3020	4520	100	24	1" BSP
4020 TK 220 V AC	3020	4520	100	24	1" BSP
4024 TK 24 V DC	5670	8470	120	24	1" BSP
4024 TK 220 V AC	5670	8470	120	24	1" BSP
4024 TK 230-400 AC 3 FAZ	5670	8470	120	24	1" BSP
4030 TK 24 V DC	7880	12030	140	24	1" BSP
4030 TK 220 V AC	7880	12030	140	24	1" BSP
4030 TK 230-400 AC 3 FAZ	7880	12030	140	24	1" BSP
4040 TK 24 V DC	10050	15030	160	24	1 1/4" BSP
4040 TK 220 V AC	10050	15030	160	24	1 1/4" BSP
4040 TK 230-400 AC 3 FAZ	10050	15030	160	24	1 1/4" BSP
4050 TK 24 V DC 4 FANLI	13550	20050	180	24	1 1/4" BSP
4050 TK 220 V AC	13550	20050	180	24	1 1/4" BSP
4050 TK 230-400 AC 3 FAZ	13550	20050	180	24	1 1/4" BSP
4030 2TKS ÇİFT FANLI 24 V DC	15550	23500	260	24	1 1/4" BSP
4030 2TKS ÇİFT FANLI 220 V AC	15550	23500	260	24	1 1/4" BSP
4040 2TKS ÇİFT FANLI 24 V DC	19400	29400	320	24	1 1/2" BSP
4040 2TKS ÇİFT FANLI 220 V AC	19400	29400	320	24	1 1/2" BSP
TK6 (230/400 3 FAZ 0.55 KW 1500 D/D)	26100	35100	200	26	1 1/4" BSP
TK8 (230-400 3 FAZ 2.2 KW 1500 D/D)	51100	72050	250	26	1 1/2" BSP
TK10 (230-400 3 FAZ 5.5 KW 1500 D/D)	135100	180100	500	10	SAE 3"

duoPower

Havalı Soğutucular Air Heat Exchangers



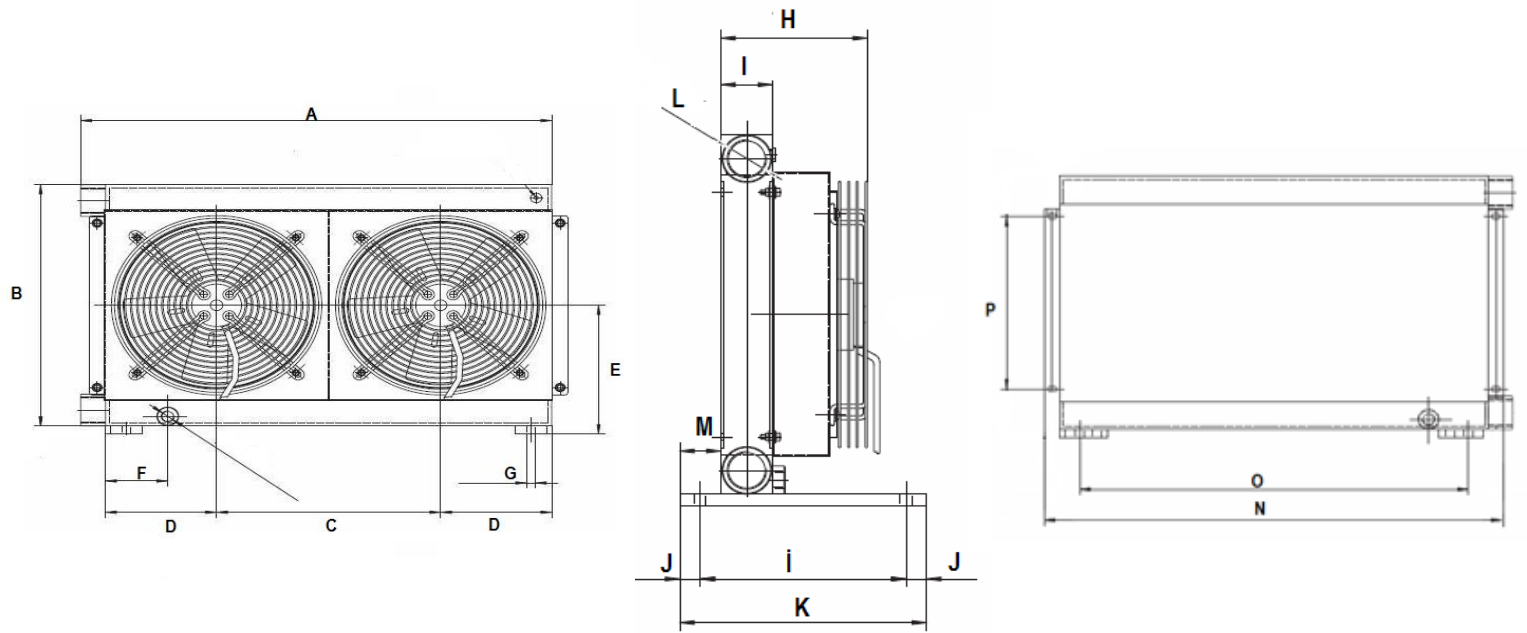
ÜRÜN KODU PRODUCT CODE	A Mm	B Mm	B1 Mm	C- C1 Mm	D Mm	E Mm	F Mm	G Mm	H Mm	I Mm	i Mm	J Mm	K Mm	L Mm	M Mm	N Mm	O- O1 Mm	P Mm	R Mm
4010 24V DC	224	240	-	112	175	160	52	1/2'	115	130	45	125	155	-	-	1/2'	38	105	-
4010 220V AC	224	240	-	112	175	160	52	1/2'	115	130	45	125	155	-	-	1/2'	38	105	-
4015 24V DC	320	304	83	160	241	273	23	1/2'	130	162	45	125	155	50	15	1'	46	180	48
4015 220V AC	320	304	83	160	241	273	23	1/2'	130	162	45	125	155	62	15	1'	46	180	48
4020 24V DC	320	304	83	160	241	273	23	1/2'	180	162	63	125	155	68	15	1'	46	180	48
4020 220V AC	320	304	83	160	241	273	23	1/2'	200	162	63	125	155	70	15	1'	46	180	48
4024 24V DC	380	366	82	190	297	325	27	1/2'	190	193	63	125	155	65	15	1'	42	240	44
4024 220V AC	380	366	82	190	297	325	27	1/2'	168	193	63	125	155	68	15	1'	42	240	44
4030 24V DC	444	425	84	222	367	390	27	1/2'	195	226	63	125	155	45	15	1'	40	310	48
4030 220V AC	444	425	84	222	367	390	27	1/2'	145	226	63	125	155	52	15	1'	40	310	48
4040 24V DC	520	535	84	260	468	485	27	1/2'	210	285	63	130	155	85	15	1 1/4'	42	400	48
4040 220V AC	520	535	84	260	468	485	27	1/2'	330	285	63	130	155	185	15	1 1/4'	42	400	48



ÜRÜN KODU PRODUCT CODE	A Mm	B Mm	C Mm	D Mm	E Mm	F Mm	G Mm	H Mm	I Mm	J Mm	K Mm	L Mm	M Mm	N Mm	O Mm	P Mm	R Mm
4050 24V DC	605	650	400	600	40	40	35	25	1 1/4'	1/2'	270	63	330	180	20	50	75
4050 220V AC	605	650	400	600	40	40	35	25	1 1/4'	1/2'	273	63	330	180	20	50	75

duoPower

Havalı Soğutucular Air Heat Exchangers



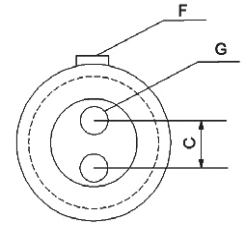
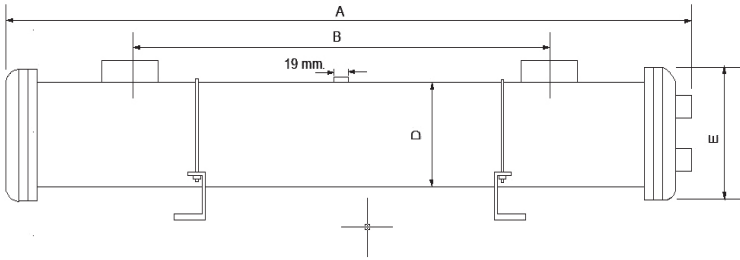
ÜRÜN KODU PRODUCT CODE	A Mm	B Mm	C Mm	D Mm	E Mm	F Mm	G Mm	H Mm	I Mm	i Mm	J Mm	K Mm	L Mm	M Mm	N Mm	O Mm	P Mm
4030 2M 24V DC	745	455	360	178	242	100	Q10	225	63	180	20	220	1 1/4'	85	767	680	310
4030 2M 220V AC	745	455	360	178	242	100	Q10	225	63	180	20	220	1 1/4'	85	767	680	310
4040 2M 24V DC	935	550	451	232	290	125	Q10	210	63	180	20	220	1 1/2'	85	957	850	400
4040 2M 220V AC	935	550	451	121	290	125	Q10	235	63	180	20	220	1 1/2'	85	957	850	400

duoPower

Sulu Soğutucular Water Heat Exchangers



ÜRÜN KODU PRODUCT CODE	$\Delta t= 20\text{ }^{\circ}\text{C}$ de Soğutma kcal / saat Cooling Kcal / hr	$\Delta t= 30\text{ }^{\circ}\text{C}$ de kcal / saat kcal / hr	MAX. YAĞ DEBİSİ litre / dak MAX. OIL lt / mn	MAX. BASINÇ BAR MAX PRESSURE BAR	YAĞ BAĞLANTI ÖLÇÜSÜ OIL WATER CONNECTION DIA.
TK-60 L	4.200	7.000	60	10	3/4' – 3/4'
TK-100 L	7.500	12.000	100	10	3/4' – 3/4'
TK-150 L	12.000	19.000	150	10	1 1/4' – 3/4'
TK-250 L	18.000	30.000	250	10	1 1/4' – 3/4'
TK-350 L	24.000	40.000	350	10	1 1/4' – 3/4'
TK-600 L	42.000	62.000	600	10	2' – 1 1/2'
TK-800 L	60.000	90.000	800	10	2' – 1 1/2'
TK-1000 L	75.000	105.000	1000	10	2' – 1 1/2'
TK-1200 L	95.000	125.000	1200	10	2' – 1 1/2'



ÜRÜN KODU PRODUCT CODE	A Mm	B Mm	C Mm	D Mm	E Mm	F Mm	G Mm	Boru Sayısı Hose Quantity	Akış lt / dak Flow / Minute	Ağırlık Kg Weight / kg
TK-60 L	465	295	40	89,10	120	3/4'	3/4'	22	60	8
TK-100 L	540	370	55	114,30	140	3/4'	3/4'	26	100	12
TK-150 L	580	375	65	139,80	170	1 1/4'	3/4'	42	150	15
TK-250 L	800	600	65	139,80	170	1 1/4'	3/4'	58	250	22
TK-350 L	1205	1000	65	139,80	170	1 1/4'	3/4'	58	350	30
TK-600 L	1225	970	85	165,20	196	2'	1 1/2'	58	600	40
TK-800 L	1725	1470	85	165,20	196	2'	1 1/2'	58	800	50
TK-1000 L	2140	1890	85	165,20	196	2'	1 1/2'	58	1000	60
TK-1200 L	2520	2270	85	165,20	196	2'	1 1/2'	58	1200	70

duoPower

Hareketli Kablo Kanalı
Movable Cable Channel



Series	Opening principle	Inner height [mm] Hi	outer diameter [mm] ø	Inner width [mm] Bi	Outer height [mm] Ha	Outer width [mm] Ba	Bend radius [mm] R	Link pitch [mm] I
C01	Micro cable carriers, Closed desing	the smallest applications. One-piece, non-openable						
		07	8	7-30	10	12-35	15-48	16.7
		10	8	10-30	12	14-34	18-38	20
		15	12	16-50	19.3	24.2-58.2	25-48	20
C11	Micro cable carriers, Opening Desing	Fill the cable quickly and easily; Split crossbar along the inner radius						
		05	3	5-10	8	8.7-13.7	10-18	10
		07	4.5	7-30	10	12-35	15-48	16.7
		10	6.5	10-20	15	16.5-26.5	18-38	20
C21	Micro cable carriers, Openable along the outer radius	Fill the cable quickly and easily; Openable along the outer radius						
		14.3	12	16-40	19.3	24.2-48.2	28-48	20
		20	16	25-50	25	36-61	28-48	30.5
C31	Micro cable carriers, Openable along one side	Two-pieces design, Openable along the outer radius or inner radius						
		10	8	10-30	15	17.4-37.4	18-38	20
		15	12.5	16-50	19.3	23.8-57.8	28-48	20
		20	16	25-50	25	36-61	28-48	30.5
C02	Universal cable carriers	For almost any application. Crossbars removable along the inner and outer radius						
		18	16	38-125	28	54-141	38-150	40
		25	23	38-125	35	54-141	55-250	46
		35	32	50-150	50	66-166	63-250	56
		45	42	75-175	64	95-195	75-300	67
C03	High load cable carriers	Strong carrier with crossbars every link						
		32	28	50-200	54	73-223	63-300	56
		42	38	50-200	64	76-226	75-350	67
		56	50	100-200	84	134-234	135-500	91
		80	72	100-200	108	148-248	150-500	111
C03	High load cable carriers	Strong carrier with crossbars every link						
		32	28	50-200	54	73-223	63-300	56
		42	38	50-200	64	76-226	75-350	67
		56	50	100-200	84	134-234	135-500	91
		80	72	100-200	108	148-248	150-500	111

Series	Opening principle	Inner height [mm] H_i	outer diameter [mm] \varnothing	Inner width [mm] B_i	Outer height [mm] H_a	Outer width [mm] B_a	Bend radius [mm] R	Link pitch [mm] I	
C03H High – strength cable carriers									
Special crossbar design with freely definable inner width									
		32	28	200-400	54	223-423	63-300	56	
		42	38	200-400	64	226-426	75-350	67	
		56	50	200-600	84	234-634	135-500	91	
		80	72	200-600	108	248-648	150-500	111	
C04 Quiet cable carriers, smooth running and cleanroom applications									
Special design and small pitch for smooth running and cleanroom applications									
		28	25	30-60	35	46-76	55-150	22	
C06 Quiet cable carriers, high-speed and cleanroom applications									
Special design and small pitch for high-speed and cleanroom applications									
		29	25	40-120	35	56-136	55-150	22	
		35	31	40-120	42	60-140	55-150	25	
		40	36	50-150	54	70-170	63-200	27.8	
		52	46	50-150	65	74-174	75-250	30	
C04 Quiet cable carriers, smooth running and cleanroom applications									
Special design and small pitch for smooth running and cleanroom applications									
		28	25	30-60	35	46-76	55-150	22	
C06 Quiet cable carriers, high-speed and cleanroom applications									
Special design and small pitch for high-speed and cleanroom applications									
		29	25	40-120	35	56-136	55-150	22	
		35	31	40-120	42	60-140	55-150	25	
		40	36	50-150	54	70-170	63-200	27.8	

Plastic Plain Bearings



Plastic Linear Bearings



Plastic Ball Bearings



Plastic Spherical Bearings



Guide rails & Screw nuts



Automation technology



Slewing Ring Bearings



Steering Rack Bearings



Fluoroplastic Bearing



Knife Edge Rollers



Escalator Rotary Chains



Cable Carriers Flexible Cables



Semi-finished Products



Filament-wound Bearings



Composite anti-wear pads



Metal Sliding Bearings



Plastic Plain Bearings

Basic function			
General		CSB-EPB The most common material	
			CSB-EPB1 Especially suitable for truck hinges
			
			CSB-EPB3 Enhanced type
High load		CSB-EPB12 Especially suitable for oscillation	
			CSB-EPB22 Good wear resistance under extremely high load
			
			CSB-EPB5 High temperature Excellent chemical resistance
High temperature		CSB-EPB4 Work consecutively at 200°C	
			CSB-EPB24 Temperature up to 200°C For use in fuel oil
			
			CSB-EPB5 Work consecutively at 250°C, Good chemical resistance
Low friction coefficient		CSB-EPB13 Maintain low friction coefficient either at high or low speed	
			CSB-EPB7 Suitable for high speed High wear resistance
			
			CSB-EPB11 Not PTFE and Silicon. Good wear resistance for low load. Suitable for soft shaft
Anti-corrosion		CSB-EPB4 Work consecutively at 200°C	
			CSB-EPB5 Work consecutively at 250°C Highest corrosion resistance
			
			CSB-EPB8 Work consecutively at 200°C, Specialized underwater operation
Humid environment		CSB-EPB2 Good for Humidity condition	
			CSB-EPB4 High strength Good chemical resistance
			
			CSB-EPB8 Underwater operation
grade		CSB-EPB5A High temperature 250°C FDA grade	
			CSB-EPB6 Soft shaft available Food-classic
			
			CSB-EPB6A For the food and tobacco industry, Low speed
Economic		CSB-EPBH General Type	
			CSB-EPB2D Low Friction coefficient Low cost
			
			CSB-EPB3G High strength

Spherical Bearings



BAL
[Ø4mm-Ø30mm]



GLB
[Ø4mm-Ø30mm]



GLBF
[Ø20mm]



GIB
[Ø6mm-Ø12mm]



GOB
[Ø6mm-Ø10mm]



GFB
[Ø4mm-Ø30mm]



GFB-ALG
[Ø6mm-Ø30mm]



GSB
[Ø4mm-Ø30mm]



GSB-ALG
[Ø6mm-Ø30mm]



GBB
[Ø16mm-Ø30mm]



GBB-ALG
[Ø16mm-Ø30mm]



GNB
[Ø8mm-Ø30mm]



GDB
[Ø4mm-Ø12mm]



GVCE
[Ø6mm-Ø12mm]



GVCJ
[ØM8]



GSB-OP
[Ø6mm-Ø10mm]



GSB-IP
[Ø6mm-Ø10mm]



GC
[Ø6mm-Ø12mm]



GTB
[Ø5mm-Ø20mm]

Plastic Linear Bearings



LIN-12RFL
[Ø10mm-Ø50mm]



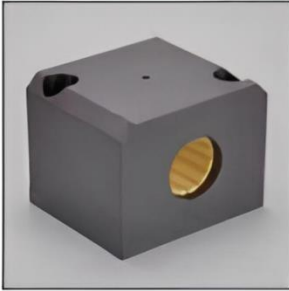
LIN-12RTL
[Ø10mm-Ø50mm]



LIN-12RFM
[Ø10mm-Ø50mm]



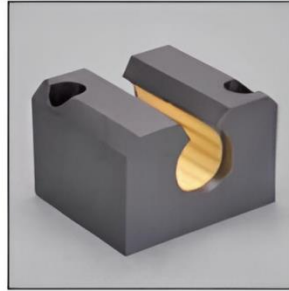
LIN-12RTM
[Ø10mm-Ø50mm]



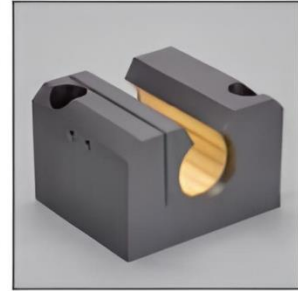
LIN-11B
[Ø12mm-Ø50mm]



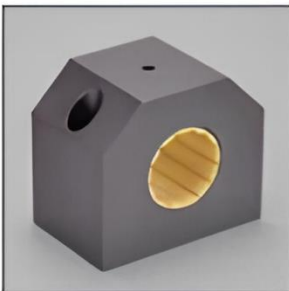
LIN-11BH
[Ø10mm-Ø30mm]



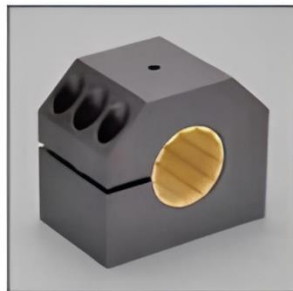
LIN-11BK
[Ø12mm-Ø50mm]



LIN-11BKE
[Ø12mm-Ø50mm]



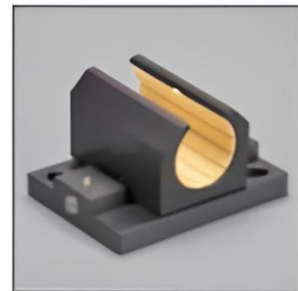
LIN-12B
[Ø12mm-Ø50mm]



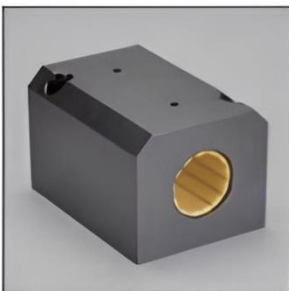
LIN-12BE
[Ø12mm-Ø50mm]



LIN-11BF
[Ø12mm-Ø50mm]



LIN-11BFK
[Ø12mm-Ø50mm]



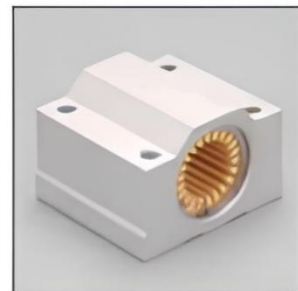
LIN-12BL
[Ø12mm-Ø50mm]



LIN-12BHL
[Ø10mm-Ø30mm]



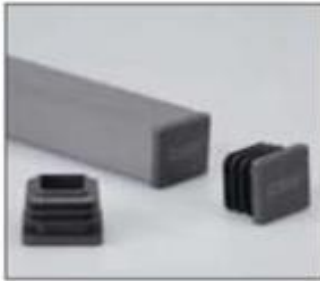
LIN-12BLP
[Ø12mm-Ø50mm]



LIN-01G
[Ø12mm-Ø30mm]



- Square linear guide system ensures linear, torque-resistant motion are ideally suited for the unsupported applications. Due to the hollow design of the surface hard anodized Aluminum alloy square rail, the cables can be inserted and protected in hollow profile and installed with LIN-12Q plastic linear bearing will be maintenance free and flexible installation.
- Maintenance-free, high wear resistance
- Low noise and fitted very easy
- Linear movement with torque resistance
- Resistance to dirt and dust



QAS / QAS-EC01
Size: 20mm



LIN-12Q
Inner dimension: 20mm



LIN-12QRF
Inner dimension: 20mm



LIN-12QRFL
Inner dimension: 20mm



LIN-12QRT
Inner dimension: 20mm



LIN-12QRTL
Inner dimension: 20mm



LIN-12QB
Inner dimension: 20mm



LIN-12QBL
Inner dimension: 20mm

duoPower

Yağlımasız Yataklar
Non-Lubricated Bearings



Plastic Cable Carriers

Bellows



BL bellows is suitable for use in general mechanical applications, The good anti-freezing ability and self-extinguishing properties can be used in automotive industries. The bellows keep high impact resistance in cold temperatures and good weather resistance.

- Self-extinguishing class V2
- Made of polyamide with specially modified to withstand freezing temperatures
- Halogen and cadmium free, high impact resistance, even at low temperatures
- Temperature range: -40°C to +105°C; short-term: +150°C
- Chemical resistance: Against fuels, mineral oils, greases, alkalis, weak acids and bases, etc.



Flammability Class
UL94 V2



certification



Torsional motion possible

duoPower

Kablo Koruma Spirali ve Aksesuarları

Flexible Conduits and Fixing Accessories

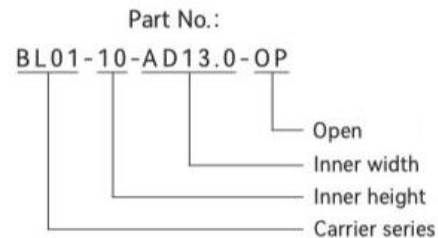
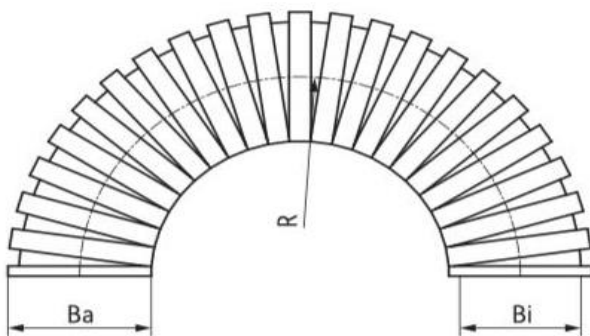


BL01 Bellows



Standard dimensions

Part No. (Close)	Part No. (Open)	Bi		Ba	R	Max. tension strength [N]	Strain at break [%]	Max. length [m]	Weight [kg/m]
		Inner diameter [mm]	Outer diameter [mm]	Outer diameter [mm]	Bend radius [mm]				
BL01-06-AD10.0	BL01-06-AD10.0-OP	6.0	10.0	10.0	16	200	120%	100	0.018
BL01-10-AD13.0	BL01-10-AD13.0-OP	10.0	13.0	13.0	20	350	120%	100	0.023
BL01-12-AD15.8	BL01-12-AD15.8-OP	12.0	15.8	15.8	30	500	150%	100	0.033
BL01-14-AD18.5	BL01-14-AD18.5-OP	14.3	18.5	18.5	40	650	160%	100	0.042
BL01-17-AD21.2	BL01-17-AD21.2-OP	17.0	21.2	21.2	45	850	200%	100	0.054
BL01-20-AD25.0	BL01-20-AD25.0-OP	20.0	25.0	25.0	45	1000	200%	100	0.062
BL01-23-AD28.5	BL01-23-AD28.5-OP	23.0	28.5	28.5	50	1100	200%	50	0.084
BL01-29-AD34.5	BL01-29-AD34.5-OP	29.0	34.5	34.5	60	1600	200%	50	0.104
BL01-36-AD42.5	BL01-36-AD42.5-OP	36.0	42.5	42.5	70	1800	200%	50	0.138
BL01-48-AD54.5	BL01-48-AD54.5-OP	48.0	54.5	54.5	90	2800	200%	25	0.224



Accessories



Brackets
Product information: P133



Quick connectors
Product information: P134



Water-proof connectors
Product information: P135



Right-angle connectors
Product information: P136

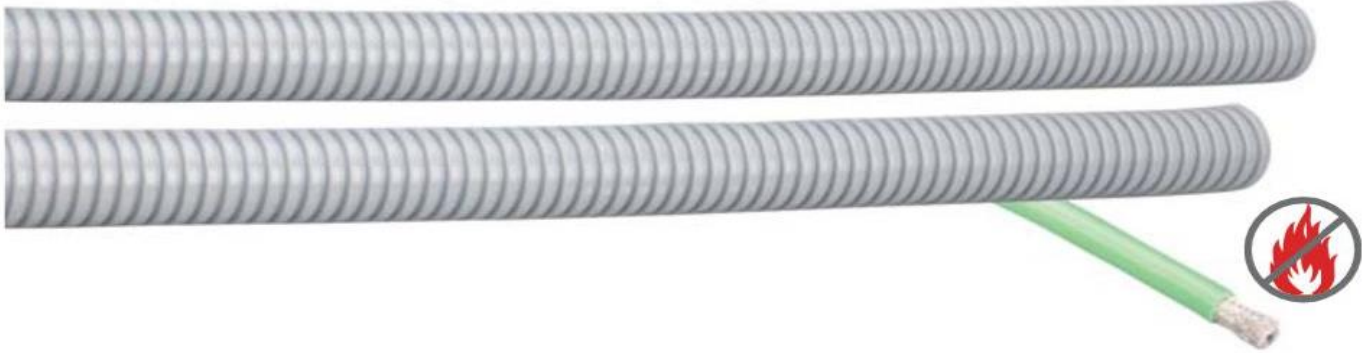
duoPower

Kablo Koruma Spirali ve Aksesuarları

Flexible Conduits and Fixing Accessories

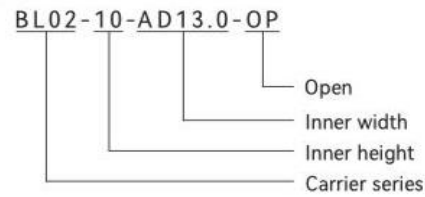
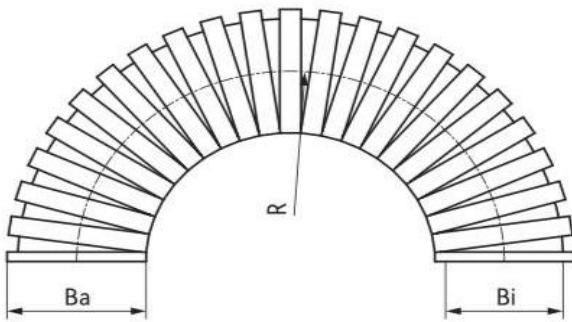


BL02 Bellows



Standard dimensions

Part No. (Close)	Part No. (Open)	Bi	Ba	R	Max. tension strength [N]	Strain at break [%]	Max. length [m]	Weight [kg/m]
		Inner diameter [mm]	Outer diameter [mm]	Bend radius [mm]				
BL02-10-AD13.0	BL02-10-AD13.0-OP	10.0	13.0	20	350	120%	100	0.023
BL02-12-AD15.8	BL02-12-AD15.8-OP	12.0	15.8	30	500	150%	100	0.033
BL02-14-AD18.5	BL02-14-AD18.5-OP	14.3	18.5	40	650	160%	100	0.042
BL02-17-AD21.2	BL02-17-AD21.2-OP	17.0	21.2	45	850	200%	100	0.054
BL02-20-AD25.0	BL02-20-AD25.0-OP	20.0	25.0	45	1000	200%	100	0.062
BL02-23-AD28.5	BL02-23-AD28.5-OP	23.0	28.5	50	1100	200%	50	0.084
BL02-29-AD34.5	BL02-29-AD34.5-OP	29.0	34.5	60	1600	200%	50	0.104
BL02-36-AD42.5	BL02-36-AD42.5-OP	36.0	42.5	70	1800	200%	50	0.138
BL02-48-AD54.5	BL02-48-AD54.5-OP	48.0	54.5	90	2800	200%	25	0.224



Accessories



Brackets
Product information: P133



Quick connectors
Product information: P134



Right-angle connectors
Product information: P136

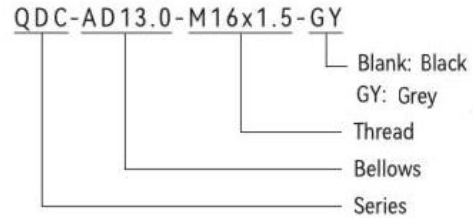
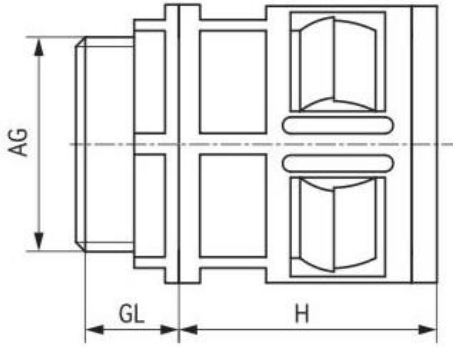
Accessories | Quick connectors

Quick connectors



- Compact modular design reduces cost and provides less installation time and space
- Wide range of applications for maximum safety and sealing performance
- Great durability, anti-aging, safe to use, long life
- Excellent impact strength

Standard dimensions



Part No.	Part No.	Bellows	Thread [mm]	Outer diameter [mm]	Inner diameter [mm]	GL [mm]	H [mm]	Weight [g]
QDC-AD13.0-M16x1.5	QDC-AD13.0-M16x1.5-GY	AD13.0	M16x1.5	16	12	10	25	2.2
QDC-AD15.8-M16x1.5	QDC-AD15.8-M16x1.5-GY	AD15.8	M16x1.5	16	12	12	28	2.7
QDC-AD18.5-M20x1.5	QDC-AD18.5-M20x1.5-GY	AD18.5	M20x1.5	20	15	12	28	2.7
QDC-AD21.2-M20x1.5	QDC-AD21.2-M20x1.5-GY	AD21.2	M20x1.5	20	15	12	31	3.7
QDC-AD25.0-M25x1.5	QDC-AD25.0-M25x1.5-GY	AD25.0	M25x1.5	25	20	11	33	4.2
QDC-AD28.5-M25x1.5	QDC-AD28.5-M25x1.5-GY	AD28.5	M25x1.5	25	20	13	34	4.5
QDC-AD34.5-M32x1.5	QDC-AD34.5-M32x1.5-GY	AD34.5	M32x1.5	32	26	15	36	9.2
QDC-AD42.5-M40x1.5	QDC-AD42.5-M40x1.5-GY	AD42.5	M40x1.5	40	34	15	39	10.9
QDC-AD54.5-M50x1.5	QDC-AD54.5-M50x1.5-GY	AD54.5	M50x1.5	50	43	15	39	16.6

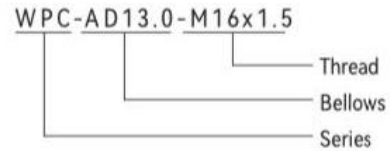
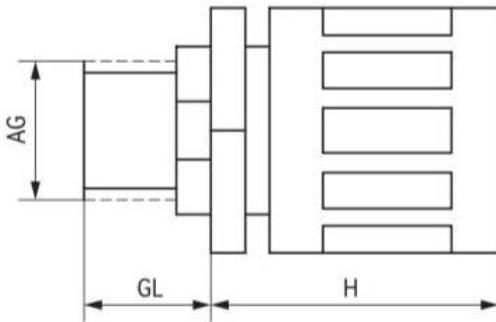
Accessories | Water-proof connectors

Water-proof connectors



- Waterproof grade IP68
- Compact modular design, easy to installation, safe to use, cost less
- Reliable waterproof performance with sealing ring, strong tensile strength
- Not easy to age, safe to use, long service life
- Excellent impact strength

Standard dimensions



Part No.	Bellows	Thread [mm]	Outer diameter [mm]	GL [mm]	H [mm]	Weight [g]
WPC-AD13.0-M16x1.5	AD13.0	M16x1.5	16	15	25	2.2
WPC-AD15.8-M16x1.5	AD15.8	M16x1.5	16	15	28	2.7
WPC-AD18.5-M20x1.5	AD18.5	M20x1.5	20	15	28	2.7
WPC-AD21.2-M20x1.5	AD21.2	M20x1.5	20	15	28	3.7
WPC-AD25.0-M25x1.5	AD25.0	M25x1.5	25	15	28	4.2
WPC-AD28.5-M25x1.5	AD28.5	M25x1.5	25	15	28	4.5
WPC-AD34.5-M32x1.5	AD34.5	M32x1.5	32	15	30	9.2
WPC-AD42.5-M40x1.5	AD42.5	M40x1.5	40	15	35	10.9
WPC-AD54.5-M50x1.5	AD54.5	M50x1.5	50	25	55	16.6

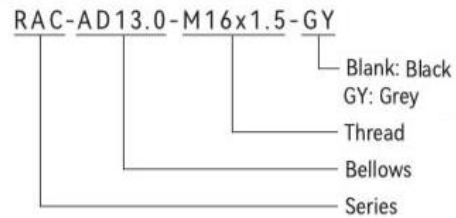
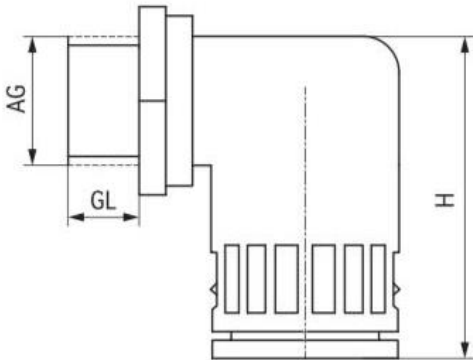
Accessories | Right-angle connectors

■ Right-angle connectors



- Compact modular design saves installation time and space, as well as cost
- Wide range of applications, maximum safety and sealing performance
- Application safely, long life, good durability
- Excellent impact strength

Standard dimensions



Part No.	Part No.	Bellows	Thread [mm]	Outer diameter [mm]	GL [mm]	H [mm]	Weight [g]
RAC-AD13.0-M16x1.5	RAC-AD13.0-M16x1.5-GY	AD13.0	M16x1.5	15	10	37	3.3
RAC-AD15.8-M16x1.5	RAC-AD15.8-M16x1.5-GY	AD15.8	M16x1.5	16	13	43	4.3
RAC-AD18.5-M20x1.5	RAC-AD18.5-M20x1.5-GY	AD18.5	M20x1.5	20	13	46	5.3
RAC-AD21.2-M20x1.5	RAC-AD21.2-M20x1.5-GY	AD21.2	M20x1.5	20	13	49	6.3
RAC-AD25.0-M25x1.5	RAC-AD25.0-M25x1.5-GY	AD25.0	M25x1.5	25	13	52	7.3
RAC-AD28.5-M25x1.5	RAC-AD28.5-M25x1.5-GY	AD28.5	M25x1.5	25	13	57	8.3
RAC-AD34.5-M32x1.5	RAC-AD34.5-M32x1.5-GY	AD34.5	M32x1.5	32	15	65	10.3
RAC-AD42.5-M40x1.5	RAC-AD42.5-M40x1.5-GY	AD42.5	M40x1.5	40	15	78	12.3
RAC-AD54.5-M50x1.5	RAC-AD54.5-M50x1.5-GY	AD54.5	M50x1.5	50	17	95	16.3

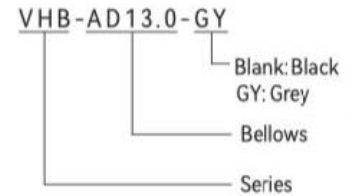
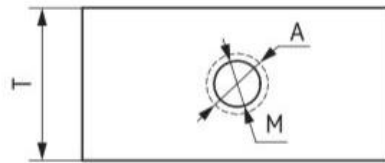
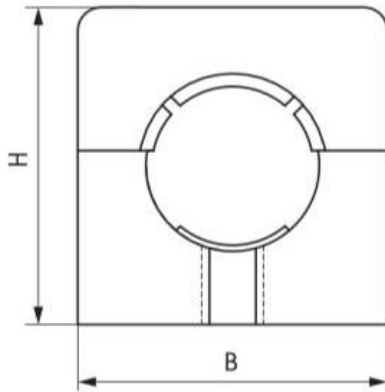
Accessories | Brackets

Brackets



- Compact modular design to save installation time, space and cost
- Long life and safety in use
- Excellence in impact strength

Standard dimensions



Part No.	Part No.	Bellows	B [mm]	H [mm]	T [mm]	M [mm]	A [mm]	Weight [g]
VHB-AD13.0	VHB-AD13.0-GY	AD13.0	30	26	12.5	4.5	8.0	7.4
VHB-AD15.8	VHB-AD15.8-GY	AD15.8	30	26	12.5	5.0	8.5	7.4
VHB-AD18.5	VHB-AD18.5-GY	AD18.5	35	33	15.0	6.0	10.0	9.0
VHB-AD21.2	VHB-AD21.2-GY	AD21.2	35	34	15.0	6.0	10.0	9.0
VHB-AD25.0	VHB-AD25.0-GY	AD25.0	42	38	16.0	6.0	11.5	10.6
VHB-AD28.5	VHB-AD28.5-GY	AD28.5	42	42	16.0	6.0	11.5	10.6
VHB-AD34.5	VHB-AD34.5-GY	AD34.5	51	52	16.0	6.5	12.0	12.2
VHB-AD42.5	VHB-AD42.5-GY	AD42.5	58	59	18.0	6.5	12.0	13.8
VHB-AD54.5	VHB-AD54.5-GY	AD54.5	73	74	20.0	7.0	12.5	15.4

duoPower

Pnömatik Malzemeler Pneumatic Products



Pnömatik Şartlandırıcı
Pneumatic Conditioner



Pnömatik Regülatör
Pneumatic Regulator



Tek Bobin Valf
Single Coil Valve



Çift Bobin Valf
Double Coil Valve



Hava Kontrollü Valfler



Mekanik Kumandalı Valfler



Pedal Kumandalı Valfler



Poliüretan Hortumlar



Air Controlled Valves



Mechanically Operated Valves



Pedal Operated Valves



Polyurethane Hoses

Pnömatik Bağlantı Elemanları
Pneumatic Connectors

Çift Millî Silindirler
Double Shaft Rollers

Kalem Silindirler
Pencil Rollers

İSO Serisi Pnömatik Silindirler
İSO Series Pneumatic Cylinders

duoPower

Sanayi Körükleri ve Kablo Taşıma Kanalları

Industrial Bellows and Cable Transport Channels



Kızak Körükleri
Sliding Guide Bellows



Saç Korumalı Körük
Metal Protected Bellows



Mil Körükleri
Shaft Bellows



Açık Seri Kablo Kanalları
Open Serial Cable Trays



Kapalı Seri Kablo Kanalları
Closed Serial Cable Trays



Ağır Seri Alüminyum Barlı Kablo Kanalları
Heavy Series Aluminum Bar Cable Trays



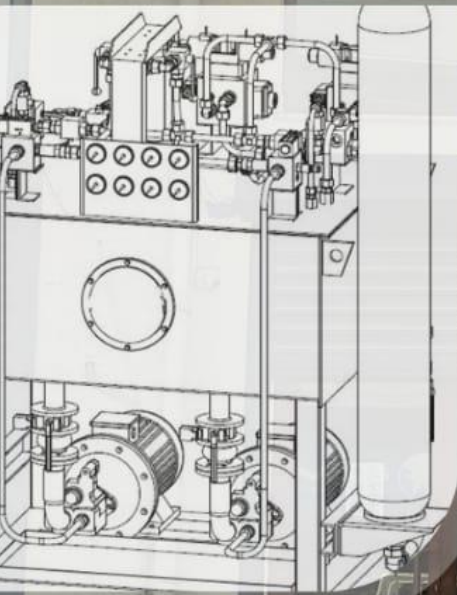
Esnek Kablo Kanalları
Flexible Cable Trays

duoPower

Hidrolik Üniteler
Hydraulic Units



EK teknik hidrolik



☎ **+90 (224) 220 10 10**
🌐 **www.ekteknik.com**
✉ **info@ekteknik.com**
📍 **Alaaddinbey Mahallesi 618.
Sok. No:8 Nilüfer/BURSA**

